

2015 Lab Animal

1. Mouse



Tissue from an Mouse:

Morphologic Diagnosis: Rectal prolapse

Causes: 1. Syphacia obveluta 2. Citrobacter rodentum 3. Heicobacter sp

2. Rat



2. Tissue from a Rat:

Morphologic Diagnosis: Pituitary gland: Pituitary adenoma (carcinoma)

3. Mouse



3. Tissue from a Mouse:
Morphologic Diagnosis: Haired skin: Diffuse Hyperkeratosis

Cause: *Corynebacterium bovis*

Common Strain: Nude mouse

4. Rabbit



4. Tissue from a Rabbit:

Morphologic Diagnosis: Multifocal to coalescing
necrohemorrhagic typhlitis

Name the Disease: Enteritis complex in rabbits

Most likely Cause: *Clostridium spiroforme*

5. Rat



5. Tissue from a Rat:

Morphologic Diagnosis: Mesenteric arteries: necrotizing and
proliferative arteritis

Name the disease: Polyarteritis nodosa

Similar cause in another lab animal species: Beagle pain
syndrome

6. Guinea Pig

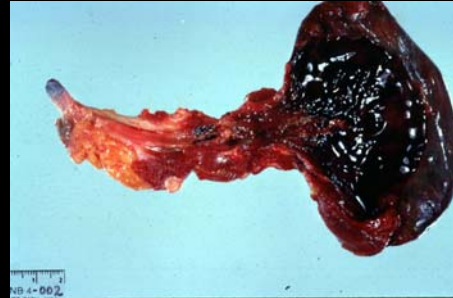


6. Tissue from a Guinea Pig:

Morphologic Diagnosis: Bone: Osteochondrodysplasia with retention of cartilage cores, hemorrhage and microfractures

Pathogenesis: Ascorbic acid def> lack of hydroxylation of proline and lysine> improper helical structure> inadequate support of vessel walls> loose attachment of periosteum to bone

7. Squirrel monkey



7. Tissue from a Squirrel Monkey:

Morphologic diagnosis: Necrohemorrhagic cystitis

8. Hamster



8. Tissue from a Hamster:

Name the condition: Kidney: Renal amyloidosis
Chronic nephropathy

9. Rabbit



9. Tissue from a Rabbit:

Name the disease: Mucoïd enteropathy

10. Cynomolgus Monkey



10. Tissue from a Cynomolgus Monkey:

Morphologic Diagnosis: Liver: Diffuse hepatic lipidosis

11. Rat



11. Tissue from a Rat:

Morphologic Diagnosis: Testicles: Interstitial tumor

12. Rat



12. Tissue from a Rat:

Morphologic Diagnosis: Liver: Multifocal cystercercoid cyts

Cause: *Cysticercus fasciolaris*, *Tenia teniaformis*

13. Mouse



13. Tissue from a Mouse:

Name the disease: Ectromelia

Two associated lesions: Necrotizing hepatitis, Necrotizing splenitis

Cause: Mouse orthopoxvirus

14. Rabbit



14. Tissue from a Rabbit:

Morphologic Diagnosis: Kidney: Lymphoma

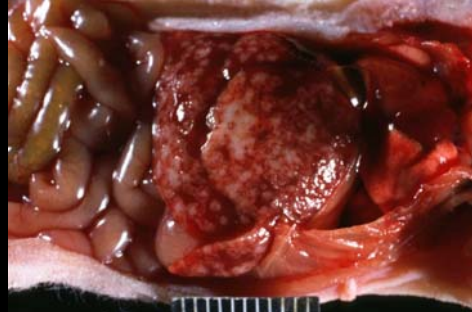
15. Rat



15. Tissue from a Rat:

Morphologic Diagnosis: Mesothelioma

16. Mouse



16. Tissue from a Mouse:

Morphologic Diagnosis: Liver: Multifocal necrotizing hepatitis

Cause: Mouse coronavirus-2

Histologic lesion: Multifocal areas of necrosis with syncytia cells

17. Ferret



17. Tissue from a Ferret:

Morphologic Diagnosis: Colon: Diffuse proliferative colitis

Cause: Lawsonia intracellularis

18. Rat

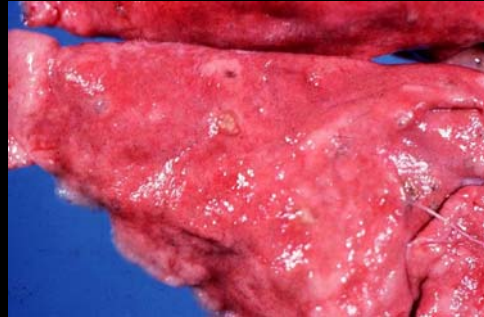


18. Tissue from a Rat:

Name the condition: Ringtail

Cause: High temperature and low humidity

19. Macaque



19. Tissue from a Macaque:

Morphologic Diagnosis: Lung: Multifocal granulomatous pneumonia

Cause: Pneumonyssus semicola

Histologic lesions: Granulomatous inflammation, cavernous mite houses, anisotropic mite pigment, intralesional arthropods

20. Ferret



20. Tissue from an Ferret:

Morphologic Diagnosis: Salivary gland: Unilateral sialoceles

21. Hamster



21. Tissue from a Hamster:

Morphologic Diagnosis: Haired skin: Transmissible Trichepithelioma

Cause: Hamster polyoma virus

22. Rabbit

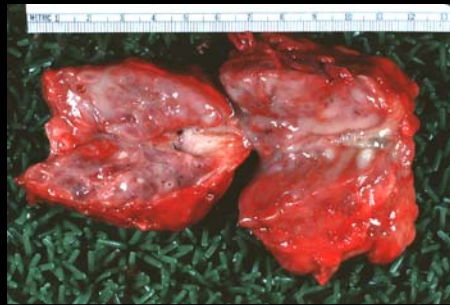


22. Tissue from a Rabbit:

Name the disease: Shope fibroma

Histologic lesions: Atypical fibroblast proliferation, epithelial hyperplasia, rete ridges, eosinophilic intracytoplasmic inclusions within the mesenchymal and epithelial cells

23. NHP



23. Tissue from a NHP:

Morphologic Diagnosis: Diffuse suppurative prostatitis and urethritits

24. Ferret



24. Tissue from a Ferret:

Morphologic Diagnosis (2): Diffuse alopecia and vulvar enlargement

Cause: Adrenal tumor

25. Rat



25. Tissue from an Rat:

Morphologic Diagnosis: Diffuse urolithiasis

26. NHP



26. Tissue from a NHP:

Morphologic Diagnosis: Retroperitoneal fibromatosis

27. Rat

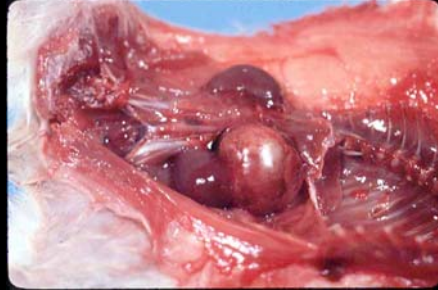


27. Tissue from a Rat:

Cause: Rat parvovirus (RV virus)

Cause in the Mouse: Minute virus of mice

28. Hamster



28. Tissue from an Hamster:

Morphologic Diagnosis: Pheochromocytoma

29. Rabbit



29. Tissue from a Rabbit:

Cause: Cheyletiella parasitovorax

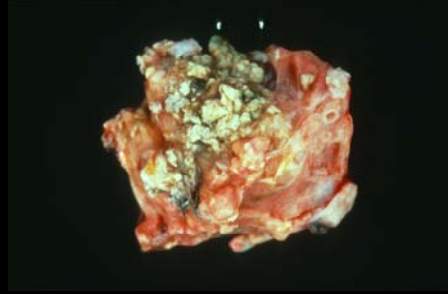
30. Ferret



30. Tissue from an Ferret :

Morphologic Diagnosis: Chordoma

31. NHP



31. Tissue from a NHP:

Morphologic diagnosis: Ovarian teratoma

32. Rhesus macaque



32. Tissue from a Rhesus macaque:

Morphologic Diagnosis: Endometriosis

33. NHP



33. Tissue from a NHP:

Cause: Armillifer armillatus

34. Rabbit



34. Tissue from a Rabbit:

Morphologic Diagnosis: Multiple oral papillomas

Cause: Rabbit oralpapilloma virus (Shope papilloma)

35. Rat



35. Tissue from a Rat:

Morphologic Diagnosis: Chylothorax

36. Guinea pig



36. Tissue from a Guinea pig:

Morphologic Diagnosis: Tympanic bullae: Bilateral suppurative otitis

Causes: *Streptococcus pneumoniae*, *S. zoeepidemicus*,
Bordetella bronchiseptica

37. Rabbit

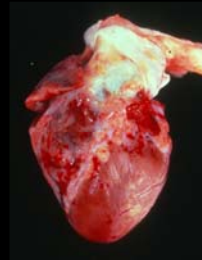


37. Tissue from a Rabbit:

Morphologic Diagnosis: Nasal cavity: Diffuse chronic rhinitis
with turbinate atrophy

Cause: *Pasteurella multocida*

38. NHP



38. Tissue from a NHP:

Morphologic Diagnosis: Heart: Diffuse fat atrophy

39. Rat

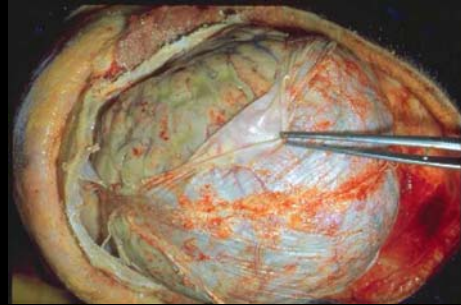


39. Tissue from a Rat:

Morphologic Diagnosis: Multifocal suppurative bronchopneumonia

Cause: *Mycoplasma pulmonis*

40. NHP

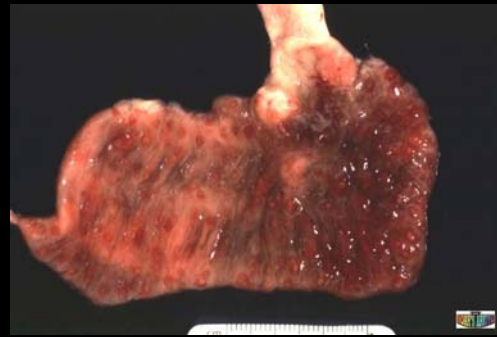


40. Tissue from a NHP:

Morphologic Diagnosis: Cerebrum and meninges: Diffuse suppurative meningoencephalitis

Cause: *Streptococcus pneumoniae*

41. NHP



41. Tissue from an NHP:

Morphologic Diagnosis: Colon: Multifocal necroulcerative or necrohemorrhagic colitis

Cause(s): *Yersinia enterocolitica* or *Shigella flexneri*

42. Rat



42. Tissue from a Rat:

Morphologic Diagnosis: Lung: Multifocal embolic (suppurative) pneumonia

Cause: *Corynebacterium kitcheri*

43. NHP

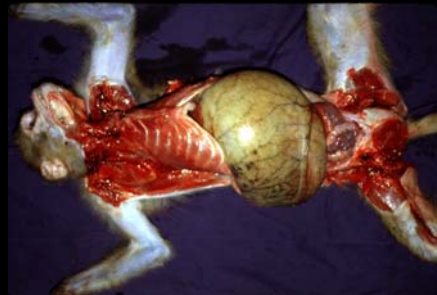


43. Tissue from a NHP:

Cause: *Nochtia nochtii*

(Gastric hyperplasia)

44. NHP



44. Tissue from an NHP:

Morphologic Diagnosis: Gastric dilation

45. Rabbit

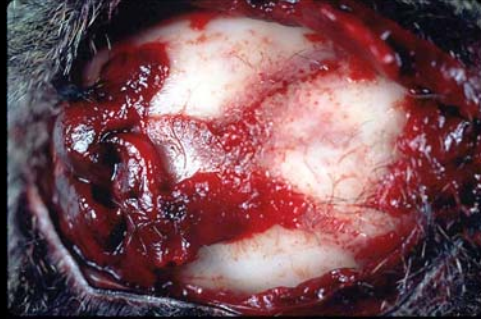


45. Tissue from a Rabbit:

Morphologic Diagnosis: Focally extensive proliferative dermatitis and chelitis

Cause: Treponema paraluiscaeniculi

46. NHP



46. Tissue from a NHP:

Morphologic Diagnosis: Pericalvarial hemorrhages

Cause: Vit C def

47. Rabbit



47. Tissue from a Rabbit:

Morphologic Diagnosis: Uterus: Multiple hemocysts (aneurysm)

48. Squirrel monkey



48. Tissue from a Squirrel Monkey:

Morphologic Diagnosis: Intercostal bone/muscle: Pericostal hemorrhage

Cause: Vit C def

49. Rat



49. Tissue from a Rat:

Morphologic Diagnosis: Mammary gland : Fibroadenoma

50. Rat



50. Tissue from a rat:

Morphologic Diagnosis: Clitoral gland adenoma