



CHARLES LOUIS DAVIS DVM FOUNDATION

A TAX-EXEMPT, DONATIVE, PUBLICLY-SUPPORTED CHARITY
FOR THE ADVANCEMENT OF VETERINARY AND COMPARATIVE PATHOLOGY

Senior Editor: S.W. Thompson, D.V.M.

Managing Editor: B. H. Williams, D.V.M.

Copy Editor: Brett Saladino, DVM

Web: <http://www.cldavis.org>

September 2011

Volume 38 Issue 6

CHAIRMAN

Samuel W. Thompson, DVM, MS

MEMBERS

James Artwohl, DVM
Cory F. Brayton, DVM
Donna M. Bouley, DVM, PhD
Corrie C. Brown, DVM, PhD
Fabio Del Piero, DVM, PhD
Dimitry Danilenko, DVM, PhD
Stephen M. Dempsey, DVM
John F. Edwards, DVM, PhD
Roderick Else, BVSc, PhD
Scott Fitzgerald, DVM, PhD
Annette P. Gendron, DVM, PhD
Sarah L. Hale, DVM
Howard A. Hartman, DVM, MS
Wanda Haschek-Hock, BVSc, PhD
Mr. Jerome Hyman, BA
Mr. Robert Hyman, BA, MS
Thomas Jacobs, DVM
Linda K. Johnson, DVM, MS, MPH
Milijan Jovanovic, DVM, PhD
Matti Kiupel, Dr. med.vet., PhD
Elizabeth McInnes, BVSc, MS
Tracey S. McNamara, DVM
Margaret M. Miller, DVM, PhD
Ricardo Ochoa, DVM, PhD
Nam-Yong Park, DVM, PhD
Lonzy Ojok, BVM, Dr. med.vet., PhD
Vladislava S. Rac, DVM, MS
Tony Ross, BVSc, MSc, PhD
Zadok Ruben, DVM, PhD
Brett H. Saladino, DVM
Mohamed Slaoui, DVM
Elemir Simko, DVM
Judith St. Leger, DVM, MS, PhD
Paul C. Stromberg, DVM, PhD
Francisco Uzal, DVM, PhD
Bruce H. Williams, DVM

Foundation Holds First Midwestern Toxicologic Pathology Day-Seminar

The Inaugural Midwest Tox Path Day Seminar was held on 3 June in Madison, Wisconsin. The seminar was jointly sponsored by the C. L. Davis Foundation and the Society of Toxicologic Pathology, and hosted by Covance Laboratories.

The five invited lecturers covered a broad range of topics and current issues within the general topic of hepatotoxicity. Keynote speaker Gary Boorman of Covance kicked off with a general overview of the microanatomy and function of the various cells that comprise the liver, and later discussed the use of toxicogenomics in safety assessment studies. Robert Roth of Michigan State University followed with a thought-provoking discussion of the influence of inflammation on idiosyncratic hepatotoxicity. Laura Boone of Covance demonstrated drug effects on bilirubin metabolism, including several fascinating video clips from intravital microscopy procedures. Lauren Trepanier of the University of Wisconsin shared a stimulating talk on the pharmacogenetics of idiosyncratic drug-induced hepatotoxicity. The day concluded with a lively review of the clinical pathology of hepatotoxicity by Bob Hall of Covance.

The 45 pathologists and toxicologists in attendance represented a diverse group from industry, academia, and government service. The audience was very engaged - each talk was followed by questions from the audience, which often led to lively discussion. The weather cooperated too, and there was even time to enjoy lunch in the sunshine on the front lawn. A great day was had by all!

“We have needed this kind of opportunity for continuing education and regional networking in the Midwest for many years,” said course coordinator Brett Saladino. “I am thrilled with the success of this first seminar, and hope that it will be the first of many more to come.”

Inside This Issue

- 1 Midwest Tox Path Mtg. Recap
- 2 2011 CLD/ACVP Mtg
- 3 2012 Australian Wildlife Mtg.
- 4 2011 CLD/AAVLD Mtg.
- 5 2011 Zoo/Wildlife Path Wkshp.
- 6 2011 Galveston Mtg.
- 7 Descriptive Path in Argentina
- 8 Veterinary Systemic Path
- 9 JHMU Fellowships
- 10 Meeting Calendar



L to R: Faculty and Course Sponsors: Brett Saladino, Robert Hall, Lauren Trepanier, Gary Boorman, Wanda Haschek-Hock, Robert Roth, Laura Boone

2011 CLD/ACVP Diagnostic Pathology Seminar: Neuropathology: Navigating the Vast Pink Wasteland



Neuropathology Basics

Common Artifacts

Comparative Neuropathology

Small Animal Neuropathology

Large Animal Neuropathology

Speakers:

Sarah Hale, JPC
William Jordan, Vet
Path Services
Fabio Del Piero, UPenn
Tom Van Winkle, UPenn

Dec 3, 2011

In Conjunction with the 2011 ACVP Meeting, Nashville, TN

The central nervous system is one of the most difficult, and yet one of the potentially most rewarding, of the major body structures for the veterinary pathologist to evaluate. The need to understand structure-function relationships, the complex microanatomy, the blinding speed at which new scientific information becomes available and the frustrating propensity of the system to artifactual changes combine to create this often-frustrating duality. Please join us for a one-day seminar designed to provide you with practical information to help simplify and refine the evaluation of the brain and spinal cord, no matter what your discipline in veterinary or comparative pathology.

Program Director:
Dr. Sarah Hale, DVM, DACVP
Joint Pathology Center
(301) 295-6196

For more info, visit:

<http://www.cldavis.org/courses/avpcoming.html#123>



WILDLIFE PATHOLOGY

Short Course February 2012 Camden



CONSERVATION, MANAGEMENT AND HEALTH OF AQUATIC, AERIAL AND TERRESTRIAL WILDLIFE

13-18 February 2012

The **CYBEC FOUNDATION** has provided generous support to bring you an excellent short course on wildlife health.

This intensive Short Course will focus on the ecology of disease, diagnosis of vector-borne diseases, human influences on wildlife disease, followed by a systematic review of the diseases of aerial, terrestrial and aquatic wildlife.

Additional practical workshops are planned on necropsy and laboratory skills, wildlife health risk assessment, and information management and mapping. The course is open to anyone with an interest in wildlife disease, including pathologists, veterinarians, conservation biologists, veterinary students and postgraduate students.

Confirmed speakers include internationally renowned wildlife pathologists:

Drs **SCOTT FITZGERALD**, **GARY WOBESER**, **IAN BARKER**, **RICHARD JAKOBHOFF**, **JUDY St. LEGER** and **LEELLEN SOLTER** along with many highly respected local speakers.

This course is coordinated by The Australian Registry of Wildlife Health in collaboration with the University of Sydney and the C. L. Davis Foundation, and supported by the Wildlife Disease Association – Australasia and SeaWorld USA.

TO REGISTER YOUR INTEREST IN ATTENDING, PLEASE CONTACT: arwh@zoo.nsw.gov.au, Phone (02) 9978 4749. The course program and registration forms will be available shortly to download from our website: <http://www.arwh.org/publications>

ACCOMMODATION

Affordable, dormitory accommodation will be available within a short distance of the conference location. To register your interest in this type of accommodation, please contact the Registry, as above.

Proudly presented by:



11th CL Davis Diagnostic Pathology Symposium: Diagnostic Respiratory Pathology

September 30, 2011, Friday, 8am- 5:50pm

Buffalo Adam's Mark, Buffalo, NY

in conjunction with the 54th Annual AAVLD annual meeting

The Charles Louis Davis DVM Foundation will be conducting an eight-hour continuing education symposium entitled "Diagnostic Respiratory Pathology" on September 30, 2011. Course Director Matti Kiupel (Michigan State University) and invited guest lecturers Jeff Caswell (University of Guelph), Dennis Wilson (University of California Davis) and Edward Dubovi (Cornell University). The following topics will be covered: Respiratory pathology of horses, cattle, swine, dogs and cats including and diagnosis of viral respiratory diseases. Didactic lectures will be combined with audience participation to result in an engrossing day-long seminar. CL Davis is an approved CE provider. Don't miss out on what promises to be another exciting C.L. Davis/AAVLD co-sponsored symposium.

Tuition of \$125 includes refreshments, CD of presentations and continuing education credits. The tuition fee will be waived for the winners of the travel award.

Please Pre-register to guarantee receipt of materials. Registration is through CL Davis and is separate from meeting registration fees.

Additional information and registration materials are available at the CL Davis Foundation Web site: <http://www.cldavis.org> or call 847-367-4359.

Introduction, announcements	Kiupel	08.00 – 08.10
Morphologic patterns of lung disease	Caswell	08.10 – 08.30
Lung biology and pulmonary disease	Wilson	08.30 – 09.30
Break	30 min	09.30 – 10.00
Respiratory disease of cattle	Caswell	10.00 – 11.30
Lunch	1 hour	11.30 – 12.30
Respiratory disease of dogs and cats	Wilson	12.30 – 13.30
Virology for the pathologist	Dubovi	13.30 – 15.00
Break	30 min	15.00 – 15.30
Respiratory disease of horses	Caswell	15.30 – 16.30
Respiratory disease of pigs	Kiupel	16.30 – 17.30
Discussion and closing comments	All	17.30 – 17.50

Got Pictures of a Foundation Meeting?

We'd love them for the newsletter! Attending a meeting, using a publication, spending time in a Foundation study center anywhere in the world – it all makes the newsletter a more interesting read and shows how much we are doing around the world.

Please send any digital images to Foundation newsletter to info@cldavis.org and thanks!!!



**AAZV 18th Annual
Zoo & Wildlife Pathology Workshop 2011**
*Co-sponsored by the CL Davis, D.V.M. Foundation
& University of California, Davis, CA*

This all day workshop will be held on Sunday, October 23, 2011 from 8:00 AM to 5:00 PM in Kansas City, Missouri. Featured will be case presentations of classic or new entities of zoo and wildlife species.

The pathology topics this year are nutritional diseases and intoxications. The keynote speakers will be Drs. Robert Poppenga of UC Davis, School of Veterinary Medicine and the California Animal Health and Food Safety Laboratory for toxicology and Dr. Mark Edwards from the Department of Animal Science, California Polytechnic State University (Cal Poly-SLO) for nutritional diseases. Both individuals are known for their expertise as it applies to zoo and wildlife species.

If you wish to present a case, please email Linda Lowenstine (lilowenstine@ucdavis.edu) and Dick Montali (montalirj@yahoo.com) with a brief description of the case by July 20, 2011. The cases will be reviewed and 15 cases will be selected for presentation at the Workshop. Those applicants with chosen cases will be notified by email within the following week.

INSTRUCTIONS FOR CASES SELECTED

1. Only 5 replicate H&E slides plus 2 unstained are required. Please limit slides to one piece of tissue with the lesion to facilitate scanning for DVD/Aperio production. Send by August 17, 2011 to:

Dr. Linda J. Lowenstine
Vet Med: PMI
University of California, Davis
One Shields Ave
4206 VM3A
Davis, CA 95616-5270

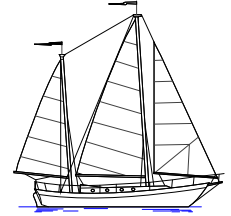
2. Please prepare your writeup in Microsoft Word (NOT pdf files) using the following headings and send electronically by August 31, 2011 to Dr. Lowenstine: CONTRIBUTOR(S)/ INSTITUTION: SIGNALMENT: HISTORY: GROSS FINDINGS: HISTOPATHOLOGIC FINDINGS: MORPHOLOGIC/ETIOLOGIC DIAGNOSIS: DISCUSSION: REFERENCES: ACKNOWLEDGMENTS:

3. The syllabus from the case writeups should be available after September 15, 2011 and can be downloaded from the CL Davis DVM Foundation website at: <http://www.cldavis.org/syllabi.html> A DVD with the histologic case findings and syllabus will be distributed to all presenters and registered attendees.

Cost: \$150 (\$90 for veterinary students) – full day includes DVD and refreshments. All participants must register for this course even if you have not submitted a case.

Registration for the Annual Conference and the Zoo and Wildlife Pathology Workshop 2011 will open on July 1, 2011. Go to www.aazv.org and follow the link for Conference Registration. If you are unable to register online, call (904)225-3275 and ask for a registration form to be mailed or faxed to you.

SOUTHCENTRAL DIVISION Meeting Returns to San Luis Resort



The Charles Louis Davis, D.V.M. Foundation will present the 21th Annual Program of the Southcentral Division for members and guests, Friday and Saturday, October 21 & 22, 2011 at The San Luis Resort, Spa and Conference Center, Galveston Island, Texas (<http://www.sanluisresort.com>). The registration fee will include a group Friday lunch and dinner, and the 2011 membership for current non-members. Guests are welcome to join us for the dinner.

Dr. Dimitry Danilenko will give an invited presentation on "So just what do pathologists in the biopharmaceutical industry do?"

Attendees are also invited to present a 15-minute report to the group on an interesting case. Please send 40+ (50 if possible) stained microslides with case information (and diagnosis, comments, applicable references on a separate page) for redistribution to participants by September 20th.

Schedule

Friday, October 21, 2011		Saturday, October 22, 2011	
9:00 – 9:30 a.m.	Registration/sign-	8:30 - 10:00 a.m.	Dr. Danilenko
9:30 – Noon	in/food	10:00 - 10:15 a.m.	Break
Noon – 1:15 p.m.	Case Reports	10:15 - 12:45 p.m.	Case Reports and adjourn
1:15 – 3:15 p.m.	Group Lunch		
3:15 – 3:30 pm	Case Reports		
3:30 – 5:00 p.m.	Break		
5:00 – 6:30 p.m.	Case Reports		
6:30 p.m.	Free time		
	Dinner, Landry's		

Local Arrangements: Dr. James Britt phone: (501) 907-2435 email: jbritt@alpc.ar.gov

Location and Lodging: The San Luis Resort \$149.00 single or double
5222 Seawall Boulevard, Galveston, TX 77551 (Reserve by 9/29/11; ask for "CL Davis Fdn")
phone: (800) 392-5937

Cost: Members: \$225.00
Non-members: \$320.00 (includes 2012 dues and DVD on Lesions of Aging Mice)
Extra Dinner Guests/Spouses: \$ 35.00

Send Slides to: Margaret Hanson, DVM
5505 TPC Parkway, Apt 3411, San Antonio, TX 78261
cell: (270) 300-1431
email: coyote43dx@yahoo.com

For more information on accommodations or a registration form, please visit the C.L. Davis Website at <http://www.cldavis.org/courses/upcoming.html#120>



1st Descriptive Veterinary Pathology Course in Argentina

Faculty of Veterinary Sciences, University of Buenos Aires-C.L. Davis Foundation

12 – 16 December 2011, Faculty of Veterinary Sciences,
University of Buenos Aires, Argentina

Program Director:

Dr. Leonardo Minatel, DVM, PhD
Facultad de Ciencias Veterinarias
Universidad de Buenos Aires
Ph: 54 11 4580 2821
E-mail: lminatel@fvvet.uba.ar

Faculty:

Dr Jo Lynne Raymond, DVM, Dipl. ACVP
Dr Fabio del Piero, DVM, PhD, Dipl. ACVP
Dr Francisco Uzal, DVM, MSc, PhD, Dipl. ACVP

Tuition Fees:

Members of the Argentine Veterinary Pathology Association: \$ (Argentinean) 400 (~ U\$ 100)
Non members: \$ (Argentinean) 1300 (~ U\$ 325)

Note: There are a limited number of seats available for this course (60) and registration will be open until this number is filled. Early registration is encouraged. **This course will be taught in Spanish.**

More Information:

More information including full faculty addresses, schedule, hotel accommodations, and registration materials are available at:

<http://www.cldavis.org/courses/upcoming.html>

Veterinary Systemic Pathology Online

775 cases grouped by System, Animal Group or Etiology. Each case includes a virtual slide and multiple microscopy images highlighting diagnostic fields.

Case reports include descriptions, diagnosis, differentials, clinical, gross and microscopic findings, comparative pathology, references and more.

Miniboards

The following tests have not been edited or verified as accurate by the ACVP Examination Committee and are only used as a tool by the AFIP for assessing the knowledge base of Department of Veterinary Pathology residents.

Examples Mini Board Questions and Answer Keys

	2011	2010	2009	2008	2007	2006
Clinical Pathology	Q	Q	Q	Q	Q	Q
Dog & Cat	Q	Q	Q	Q	Q	Q
General Pathology	Q	Q	Q	Q	Q	Q
Lab Animal	Q	Q	Q	Q	Q	Q
Large Animal	Q	Q	Q	Q	Q	Q
Mini Board Keys	Q	Q	Q	Q	Q	Q

Gross Slide Test Carousels

Carousel: C1 Select

It is now possible to select multiple systems and multiple animal groups from the VSPO cases. You may also choose to randomize the order in which they display as well as view them as unknowns. Please let us know if you encounter problems with this functionality. Here is the link for Random VSPO.

Related cases within VSPO are linked within the case reports. Each case also searches our Wednesday Slide Conference database for possibly relevant cases.

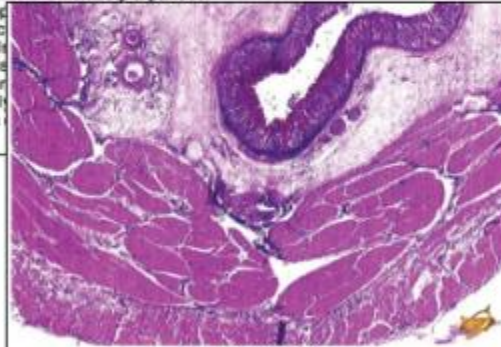
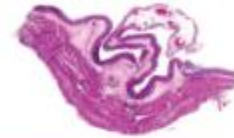
VSPO is a resource of the Veterinary Pathology Services at the Joint Pathology Center.

D-B04 - Braxy - abomasum - ox

Signalment: A 6-week-old calf

History: The animal was observed with abdominal distension and sunken eyes shortly before death.

Histopathologic Description: Abomasum: Diffusely and transmurally, the abomasum is markedly expanded by eosinophilic (fibrin), increased neutrophilic muscularis architecture. Multifocal infiltration



Close Window Macro View Show Histology Back The submucosa and tunica muscularis are expanded by eosinophilic fibrillar material (edema and fibrin). Note the ectatic lymphatics (arrow) and congested submucosal vessels.

numbers of
tunica
nd
gestion.

The database can be searched by selecting System, Animal Group, Etiology, with a combination of the three or search with keywords.

The Test Center includes mini-boards for the most recent 5 years, a selection of gross test carousels and the ability to randomly view cases based on selected criteria. View cases as unknowns for self-testing.

Carousel: C001 (50 slides)

Blank Test Test Key

Tissue from a Ferret



prev 1 Morphologic Dx next



Leading Research in Human and Animal Disease

Department of Molecular and Comparative Pathobiology 4-Year Postdoctoral Fellowship in Pathology (Research Emphasis)

The Johns Hopkins Department of Molecular and Comparative Pathobiology invites applications for our 4-year postdoctoral fellowship (research emphasis). The successful candidate will receive 3 years of outstanding research training in a multi-disciplinary mentored environment in a discipline of their choice. Research training is preceded by one year of intensive training in anatomic pathology in preparation for certification by the American College of Veterinary Pathologists (ACVP). This training opportunity is comparable to the residency/PhD opportunities offered at many veterinary schools, but is distinguished by the much broader research opportunities afforded by a large medical institution, including the option to pursue a PhD in a stellar JHU graduate program.

Program

This is a 2-part program: three years of research training, funded by the National Institutes of Health, is preceded by a year of pathology training funded by the department. During the first year trainees gain outstanding clinical experience in anatomic pathology through gross and microscopic examination of pathology cases from the Johns Hopkins University animal colonies, local veterinary practitioners, the Maryland State Laboratory, the Maryland Zoo and the National Aquarium in Baltimore. In years 2 to 4, trainees undertake full-time mentored basic or applied research in a discipline of their choice. If desired, trainees may pursue a PhD concurrent with their research training. Our faculty includes 6 ACVP Diplomates, 4 ACLAM Diplomates, and 9 biomedical research scientists, whose research interests include retrovirology, neuropathology, cardiovascular disease, infectious disease, parasitology, carcinogenesis, proteomics, and rodent phenotyping (www.hopkinsmedicine.org/mcp). Trainees also may work with faculty from more than 30 academic departments forming Johns Hopkins Medicine.

Qualifications

This position is targeted for a veterinarian who wishes to pursue a career as an experimental pathologist in a research setting. Candidates must have a DVM or equivalent degree, and be a citizen or permanent resident of the United States.

Applications

Submit your curriculum vitae, transcripts, three letters of recommendation, and a letter describing your (i) professional background, interests and goals, (ii) pathology experience and preparation, and (iii) plan for professional development. Materials should be mailed to Nancy Nath, Academic Program Coordinator, Johns Hopkins University, 733 N. Broadway, Suite 811, Baltimore, Maryland 21205, phone (443) 287-2953 or E-mailed to nnath2@jhmi.edu no later than September 30, 2011. Johns Hopkins University is an equal opportunity employer and educator.



CALENDAR OF UPCOMING EVENTS

September 2011:

9/5 – 9/7 [European Division Pathology Symposium](#), Uppsala, Sweden (in conjunction with annual ESVP/ESTP Conference)

9/30 [11th Annual CLD/AAVLD Diagnostic Pathology Meeting – Respiratory Pathology](#) – Buffalo NY

October 2011:

10/1-10/2 – [Northeastern Veterinary Pathology Conference](#) - North Grafton, MA

10/20-10/21 [5th Annual Symposium of the Argentinian Division](#) – Buenos Aires, Argentina

10/21-10/22 [21st Annual Symposium and Slide Seminar of the Southcentral Division](#) – Galveston, TX

December 2011:

12/2 [7th Annual CLD/ACVP Symposium – “Neuropathology – Navigating the Vast Pink Wasteland”](#) – Nashville, TN

12/3 – 12/7 [Annual Conference of the ACVP/ASCVP – Nashville TN](#)

February 2012:

2/13-2/18 – [Wildlife Pathology Short Course – Camden, Australia](#)

BOOKSTORE ORDERS

We occasionally have problems with overseas credit card orders through the bookstore. If you find you cannot place your order please email, call or fax the Foundation at phone: 847-367-4359, fax: 847-247-1869 email: cldavisdvm@comcast.net. Make sure you include name, address, phone, email address and credit card number with expiration date and we will ship your purchase immediately.

ARTICLES NEEDED

NEWSLETTER DEADLINES

All materials must be received no later than the 15th of the previous month in order to be included in the newsletter.

Articles should be submitted as MS Word documents. Photos should be submitted as a JPEG.

Any advertisements or registration material for symposia or courses or should be submitted at least 3-4 months in advance.

