



CHARLES LOUIS DAVIS DVM FOUNDATION

A TAX-EXEMPT, DONATIVE, PUBLICLY-SUPPORTED CHARITY
FOR THE ADVANCEMENT OF VETERINARY AND COMPARATIVE PATHOLOGY

Senior Editor: S.W. Thompson, D.V.M.
Copy Editor: A.P. Gendron, D.V.M., Ph.D.

Managing Editor: B. H. Williams, D.V.M.
Production Editor: S. L. Matulich

Web: <http://www.cldavis.org>

November 2007

Volume 35 Issue 11

BOARD OF DIRECTORS

CHAIRMAN

Samuel W. Thompson, DVM, MS

MEMBERS

Cory F. Brayton, DVM
James O. Britt, Jr., DVM, MS
Donna M. Bouley, DVM, PhD
Corrie C. Brown, DVM, PhD
Fabio Del Piero, DVM, PhD
Dimitry Danilenko, DVM, PhD
Stephen M. Dempsey, DVM
John F. Edwards, DVM, PhD
Roderick Else, BVSc, PhD
Annette P. Gendron, DVM, PhD
Howard A. Hartman, DVM, MS
Wanda Haschek-Hock, BVSc, PhD
Mrs. Estelle Hyman
Mr. Jerome Hyman, BA
Mr. Robert Hyman, BA, MS
Linda K. Johnson, DVM, MS, MPH
Milijan Jovanovic, DVM, PhD
Matti Kiupel, Dr. med.vet., PhD
Tracey S. McNamara, DVM
David E. Malarkey, DVM, PhD
Margaret M. Miller, DVM, PhD
Lonzy Ojok, BVMS, Dr. med.vet., PhD
D. Reid Patterson, DVM, PhD
Vladislava S. Rac, DVM, MS
Zadok Ruben, DVM, PhD
Paul C. Stromberg, DVM, PhD
Mary Ann Vasbinder, DVM
Alun Williams, BVMS, PhD
Bruce H. Williams, DVM

Inside This Issue

- 1 The Foundation in India
- 2 Neurotox Meeting Recap
- 3 Liver Pathology Meeting
- 4 India cont/ AABP Recap
- 4 Website Special
- 5 Gross Morbid Path Meeting
- 6 Ophtho Tox Path Meeting
- 7 2007 Argentina Meeting
- 8 Wildlife Path Meeting
- 9 Gen Path Beach Party
- 10 Pune Tox Path 2008
- 11 Meetings Calendar

The Davis Foundation in India

As part of ongoing activities of the Davis Foundation in India the Foundation held its third annual symposium at Tirupati University, in association with the annual meeting of the Indian Association of Veterinary Pathology (IAVP). The 95 assembled pathologists met at Tirupati University to listen to Dr. Cory Brayton,



one of the Foundation's most engaging and experienced lecturers, discuss many aspects of laboratory animal pathology in an 8-hour tour-de-force, entitled "Laboratory Animal Pathology: Influences of Nature & Nurture on Pathology & Research Results". During the course of this lecture,

Dr. Brayton covered diseases of laboratory rodents, lagomorphs, non-human primates, amphibians, and fish, in addition to the effects of genetic manipulation and research environments on the health and suitability of laboratory animals in research. Our sponsor for this event, Bioimagene, Inc. also provided an introduction to the assembled pathologists on the latest developments in digital pathology.

It was the first time in India for Corrie Flagg Brayton, who is well-known to pathologists around the world, especially Foundation members. A long-time member of our Faculty of

Discussants, and dual boarded in veterinary anatomic pathology and laboratory animal medicine, Dr. Brayton directs the Phenotyping Core at Johns Hopkins University School of Medicine. Cory has directed five courses on the pathology of genetically-engineered mutant animal models, and has co-directed two EuroPOLA courses in 2003 and 2006. She is currently planning the Foundations 2008 course on genetically-engineered animals for July at the Covance Learning Center in Madison, WI.



(Continued on page 4)

Schering-Plough Packs ‘Em in for Neurotoxicity

Schering-Plough sponsored/hosted the 3rd Day-Seminar of the Northeast Sub-Division on Friday, October 5, 2007 at the company’s new campus in Summit, New Jersey on the topic of “Preclinical Assessment of Neurotoxicity”. The meeting was considered a major success with 94 attendees representing local pharmaceutical companies, contract research organizations, consultants, and academic institutions with an interest in drug safety toxicology.

The speakers spanned a wide breadth of methodologies for assessing neurotoxicity including seizures, anxiety, locomotion disturbances, and depression, utilizing physiology, pathology, and behavioral techniques. The program also included a variety of short case presentations that drew an active audience discussion.



Speaker Sherry Ferguson discusses the measurement of anxiety and depression in rodents



A little known fact is that the Foundation and the Northeast Division both got their start in Summit NJ, and continue to flourish 45 and 16 year later, respectively. The NE Division is grateful to Schering-Plough for hosting this meeting and our sponsors – Aperio, Olympus, Zeiss and Bioimagine – for participating. We look forward to our next day seminar at the University of Pennsylvania on December 7 on “Toxicologic Ophthalmic Pathology.”



Upper left: Most excellent host Kevin Keane holds court on something dreadfully serious at lunch.

Bottom left: Nothing serious here – Rudi Mueller, Lindsay Tomlinson, Richard Westhouse, and Cindy Fishman are enjoying another outstanding NE Division meeting.

Pathology of the Liver

“What's New And What's Still True”

cosponsored by the
C.L. Davis Foundation and the American College of Veterinary Pathologists

DATE: November 10, 2007

LOCATION: The Westin Savannah Harbor Golf Resort & Spa, Savannah, GA

SPEAKERS:



John M. Cullen, VMD, PhD,
North Carolina State
University CVM



Thomas J. Van Winkle, VMD,
University of Pennsylvania CVM

SYMPOSIUM:

The session will review and discuss the histopathology and pathogenesis of liver disease in animals.

Contemporary diagnostic terminology, including advances in the recent World Small Animal Veterinary Association monograph on standardization of histologic diagnosis of the dog and cat will be emphasized.

Topics covered will include congenital vascular disorders, diseases of the biliary tract and hepatic parenchyma, and hepatic neoplasia.



TUITION:

\$150 for the day-long seminar, and includes 8 hours of RACE-accredited CME, syllabus, refreshments, and a copy of the WHO Fascicle on *Tumors of the Gastrointestinal Tract of Domestic Animals*. You may register for this workshop as part of your ACVP registration (<http://www.acvp.org/meeting>), or if you are only going to Savannah for this meeting, you may register at <http://www.cldavis.org/courses/2007savannah.registration.htm>

For additional information about the program or sponsorship opportunities, contact Program Director, Sarah Hale (shale@epl-inc.com), or Foundation President, Bruce Williams (williams@cldavis.org).



The Foundation in India *(continued from page 1)*

One of the most popular portions of the program, according to the participants was the last session, an interactive quiz session called "What Did You Learn Today?" Although the course went over the allotted time, the attendees showed their enthusiasm and appreciation for the days lecture's by staying and participating. The announcement of the first annual certification examination for Indian pathologists in November 2008 may have had something to do with it, however.....

Also in 2008, the Foundation will inaugurate a new annual meeting in India, in association with our partners, Bioimagine, Inc and the Indian Society for Toxicologic Pathology. Recognizing the growing demand for toxicologic pathologists in India, and elsewhere in the world, the Foundation will put on a three-day course on the fundamentals of toxicologic pathology (and every year thereafter.). We believe this meeting will serve a very useful purpose in the region as the world looks to India to fill a growing need for research in toxicologic pathology, and to the Foundation for providing needed education in this area.



Foundation steers into Canadian waters at 2007 AABP meeting

In September, the Foundation presented it's first pathology symposium for clinicians at the annual meeting of the American Association of Bovine Practitioners. The seminar, aimed at the clinician in the field, focused on gross pathology, and was organized by Dr. Claus Buergelt. Dr. Ted Clark of CARE Animal Hospital, Alberta, Canada lectured on the pathology of feedlot cattle, and Dr. Milton McAlister, University of Illinois covered pathology of calfhood diseases. Program Director Claus Buergelt closed the day with an interactive session of unusual bovine case scenarios covering the subjects of the day. Originally conceived as a small-group session, the Foundation's first pathology seminar far outdrew the other eleven seminars offered that day, and due to the interest of the AABP members, the attendance was increased to 45 over the original limit of 30. Registrants were from Canada, USA, Germany, Denmark and Mexico. We have already heard from the AABP that due to this year's excellent symposium, we will have an increased limit of participants next year to discuss the "Pathology of Bovine Abortions."



November Website Special!!!

Save \$25 this month only on the **newly issued** compendium of 6 years of syllabi from the Foundation's annual Diagnostic Pathology Symposium, given in concert with the AAVLD meeting. View presentations from symposia on Diagnostic Avian Pathology, Diagnostic Neuromuscular Pathology, Diagnostic Pathology of Abortions, Diagnostic Immunohistochemistry and Tumor Pathology, Diagnostic Toxicologic Pathology, and this year's Diagnostic Orthopedic Pathology. This is a collection not to be missed! Save \$25 and purchase today at [https:// store.cldavis.org](https://store.cldavis.org).

34th Annual Gross Morbid Anatomy of Animals



**Presented by the Charles Louis Davis, DVM Foundation
24- 28 March 2008 – Bethesda, MD**

Come join us at one of the most renowned pathology courses in the world - all species, all systems, and ten international experts presenting 36 hours of great CME. Each year, this in-depth course draws over 125 pathologists, lab animal practitioners, veterinary clinicians, and students from around the world. Don't miss out in 2008!

Course Director:
LTC Dana Scott, DVM, DACVP
Chief, Pathology Section, WRAIR
301-319-9441
Email: Dana.Scott@us.army.mil

For more information, visit:
<http://www.cldavis.org/upcoming.html>



NE Div. Day Seminar: Toxicologic Ophthalmic Pathology



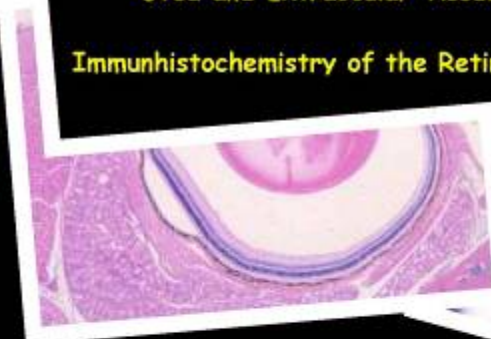
The Eye in Safety Studies

Preparation of Ocular Specimens

Anatomy, Pathology and Mechanisms of Toxicology Affecting the:

- Cornea - Lens - Retina
- Uvea and Extraocular Tissues

Immunohistochemistry of the Retina



Speakers:

Richard Dubielzig, U. Wisconsin
 Gus Aguirre, UPenn
 James Render, Pfizer
 William Beltran, UPenn

Dec 7, 2007
Hill Pavilion, Univ. of Pennsylvania, Philadelphia, PA

This seminar brings together experts in the area of ophthalmic pathology and toxicologic pathology to review key target tissues for pharmacologic and toxicologic study in the orbit and globe. Clinicopathologic correlation of anatomy, pathology, and mechanisms of toxicity will be conducted and the seminar concludes with a panel discussion and audience participation.

Program Director:
 Dr. Ralph Bunte, DVM, DACVP
 UPenn Lab Animal Resources
 Phone: 215-898-4009
 Email: rbunte@pobox.upenn.edu



FIRST SEMINAR OF THE ARGENTINE SUBDIVISION TOPICS IN SMALL ANIMAL MEDICINE

Date: November 29, 2007

Location: Faculty of Veterinary Sciences, La Plata, Argentina

Program Director: Eduardo Gimeno, Facultad de Ciencias Veterinarias, Universidad Nacional de La Plata, Teléfono: +54 - 221 - 423-6663/4 Interno 426 Fax: +54 - 221 - 425-3276 / 7980 E-mail: ejgimeno@fcv.unlp.edu

The Charles Louis Davis Foundation (<http://www.cldavis.org>) will organize an eight-hour seminar symposium entitled "Topics in Small Animal Medicine" on November 29, 2007. Course Director Eduardo Gimeno (La Plata University, Argentina) and invited guest lecturers Guillermo Couto (Ohio University, USA), and Pablo Gómez Ochoa (Zaragoza University, Spain). The Seminar will present relevant up-to-date topics in Small Animal Medicine. This will be the first regular activity of the Argentine Subdivision of the C. L. Davis Foundation leading to the establishment of an International Study Center of the Foundation in Argentina. The Seminar will take place at the University of La Plata, immediately preceding the Third Forum for Teaching of Veterinary Pathology.



TUITION:

Of \$ 25.00 (around 80.00 Argentine pesos). The tuition fee will be directed to establish a C. L. Davis International Study Center in Argentina. Additional information is available at the CL Davis Foundation Web site: <http://www.cldavis.org>

THIRD FORUM FOR TEACHING OF VETERINARY PATHOLOGY COSPONSORED BY THE ARGENTINE SOCIETY FOR VETERINARY PATHOLOGY

Date: November 30, 2007

Location: Faculty of Veterinary Sciences, La Plata, Argentina

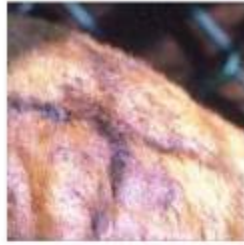
The Forum for Teaching of Veterinary Pathology has been previously held in Rosario (2003) and Buenos Aires (2005). It is a meeting for teachers and researchers with the objective to analyse the evolution of Veterinary Pathology education in Argentina. In the third edition we will have Dr. Bruce H. Williams (AFIP Dept. of Telemedicine & Distance Learning, Washington, USA) as invited guest lecturer.

Additional information is available at the CL Davis Foundation Web site: <http://www.cldavis.org>, by mail to ejgimeno@fcv.unlp.edu.ar, or eduardo.gimeno@cldavis.org. By phone: 54 221 423 6663.

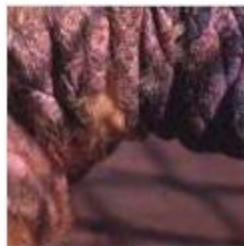
Foundation Sponsors Spanish-Language Lecture at ACVP in Savannah

As part of the Foundation's nascent initiatives in Latin America, and our partnership with the **Latin Comparative Pathology Group**, the Foundation is pleased to announce a series of Spanish-language lectures at the 2007 and 2008 meetings of the American College of Veterinary Pathologists. On Tuesday, November 13, in keeping with the overall theme of the 2007 meeting – the pathology of obesity - the very fit **Dr. Ricardo Ochoa** of Neurogen Corp. will present a lunchtime lecture on "Challenges to Developing Weight Control Therapies." The lecture will be in Spanish; handouts and slides in English. Participants are encouraged to bring their lunches to this lecture - how many carbs are in them is entirely up to you.





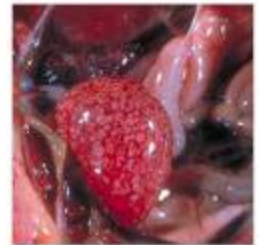
Wildlife
Forensics



Marine
Mammal
Pathology

Diseases
of
Waterfowl

Diagnostic Pathology of Diseases of Aerial, Terrestrial and Aquatic Wildlife



9-11 April 2008, Madison, WI

Now in its second year, the Foundation's primary course on wildlife takes a more in-depth look at several growing areas in this sector. This year's course focuses on forensic pathology, growing human impact on patterns of wildlife disease, and pathology of cervids and marine mammals. In addition, Thursday boasts a lineup of speakers from the National Wildlife Health Center, and culminates with a tour of their facility in Madison Wisconsin. Participants also will receive a copy of Gardiner and Poynton's excellent *Atlas of Metazoan Parasites in Tissue Section* as part of their registration. Don't miss this outstanding symposium!

Program Director:
Scott D. Fitzgerald, DVM, PhD
Diagnostic Centers for Population & Animal Health,
Michigan State University
E-mail: Fitzgerald@dcpah.msu.edu
Phone: 517-353-1774



And Much
More!

For more information on this course: visit
<http://www.cldavis.org/courses/upcoming.html#66>

COVANCE
THE DEVELOPMENT SERVICES COMPANY



General Path Beach Party

Date: July 6- July 11, 2008

Location: Sirata Beach Resort

St. Petersburg, Florida

Website: www.sirata.com

Spend the day with "McGavin and Zachary"* and your evenings with family and friends on the beach in beautiful St. Pete Island, FL! It's a party like no other that you will EVER attend, guaranteed! Whether you are a pathologist in training, or just looking to catch up, this is an event you won't want to miss !!!

Faculty

Ron Myers - Cellular Adaptation

Mark Ackermann - Inflammation

Derek Mosier—Hemostasis

Paul Snyder—Immunopathology

Matti Kiupel - Neoplasia and Tumor Biology

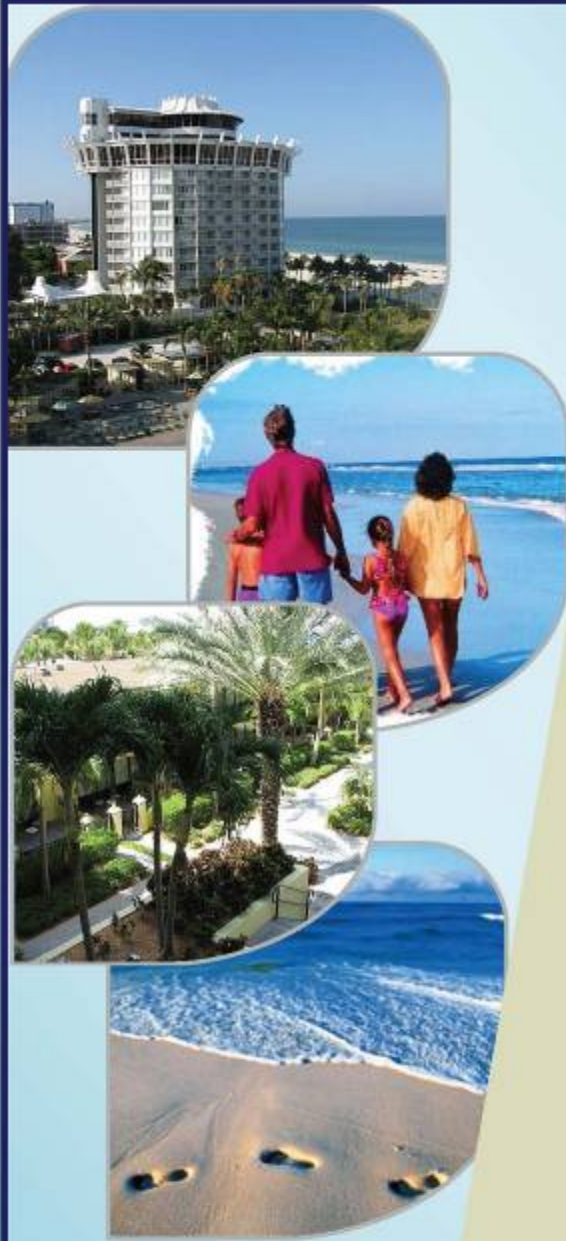
Brad Bolon - Toxicologic Pathology

Jim McLachlan - Infectious Diseases

TUITION: \$550

**McGavin and Zachary: Pathologic Basis of Veterinary Disease, 4th Ed

For more information, contact course director, Dr. Bruce Williams at williams@cldavis.org or 301-467-4024.





1st Annual Davis Foundation Indian Toxicologic Pathology Meeting

*13-15 March 2008
Pune, India*

Lectures to include:

- Comparative Approaches of Diagnostic vs. Toxicologic Pathology
- Morphologic Manifestations of Toxic Injury
- Differentiating Aging Changes versus Toxic Changes
- Artifacts vs. Real Changes in Tissues
- Commonly Used Animal Models in Toxicologic Pathology
- Novel Drug and Delivery Systems
- Advances in Digital Pathology
- Gross Pathology Practicum

For more information, including tuition, venue, and hotel information, please visit

<http://www.davisfoundation.org/india.html>

Program Directors:

Dr. Srinivas Rao, DVM, DACVP, PhD, MBA

National Institutes of Health, USA

Dr. Zadok Ruben, DVM, PhD

Davis FDN Vice President for Toxicologic Path

Featured Speakers:

Dr. Roli Khatri, Bioimagine, Inc.

Dr. Suresh Poosala, National Institutes of Health, USA

Dr. Michael Royals, PharmaJet, Inc.

Dr. Matt Wallig, University of Illinois, USA

bioimagine
Enabling Digital Pathology

PharmaJet Inc.

DATE:	SYMPOSIUM
Oct 19	West Coast Toxicologic Path Symposium, Bioimaging: for the Experimental and Toxicologic pathologist, South San Francisco, CA
Oct 19	CLD/AAVLD Annual Meeting – Diagnostic Orthopedic Pathology – Reno, NV
Oct 20	CLD/AAZV Zoo and Wildlife Path Workshop, Knoxville, TN
Nov 9	CLD/Aust Soc. Of Vet Path Meeting , Melbourne, Australia
Nov 10	CLD/ACVP Diagnostic Pathology Symposium – Pathology of the Liver – Savannah, GA
Nov 22-24	South and Eastern Africa Annual Symposium - Nairobi, Kenya
Nov 29	1st Annual Argentina Subdivision meeting, Topics in Small Animal Medicine, La Plata, ARG
Nov 30	CLD/AAEP Equine Path Symposium, Equine Herpesviral Disease, Orlando FL
Dec 7	NE Division Day Seminar: Toxicology Pathology of the Eye
6-7 Mar 08	Canadian Lab Animal Path Course, Univ. of Guelph
March 24-28, 2008	36th Annual Gross Pathology Course, Bethesda, MD
March 27-2008	CLD/AAHA Preconference Meeting – Tampa, FL - Getting the Most Out of Your Pathologist
April 9-11, 2008	CLD Symposium on Diagnostic Pathology of Aerial, Terrestrial, and Aquatic Wildlife – Madison WI
13 April 08	2 nd Annual CLD/ACLAM Symposium – Management and Diseases of Fish in the Laboratory Setting
17-20 Apr 98	Workshop and Symposium on Lab Animal Diseases, Chicago, IL – Pathology of Non-Murine Laboratory Rodents
May 15-19, 2008	CLD Seminar - Topics in Lab Animal Medicine, Raleigh, NC
June 19-22, 2008	13th International Congress on Infectious Diseases, Kuala Lumpur
July 6-12, 2008	General Pathology Beach Party – Tampa/St. Pete, FL
13-15 Aug 08	1 st Annual Colombian Symposium – Universidad Nacional, Bogota – Dermatopathology, Neuropathology, and Oncology of Small Animals
19-21 Sep 08	European Division Symposium – Dubrovnik, Croatia
25 Sept 08	2 nd Annual CLD/AABP Seminar – Pathology of Abortions in Cattle
14 Nov 2008	CLD/ACVP Diagnostic Path Symposium – San Antonio TX – Orthopedic Pathology – 50 Years On.
5 Dec 08	2 nd Annual CLD/AAEP Seminar – San Diego, CA



**C.L. DAVIS D.V.M.
FOUNDATION
SENIOR EDITOR
DR. SAMUEL THOMPSON
6241 FORMOOR LANE
GURNEE, ILLINOIS 60031
(847) 367-4359**

**Non Profit Org.
U.S. Postage
PAID
Permit #97
Gurnee, IL
60031**