



# Diagnostic Exercise

## From The Davis-Thompson Foundation\*

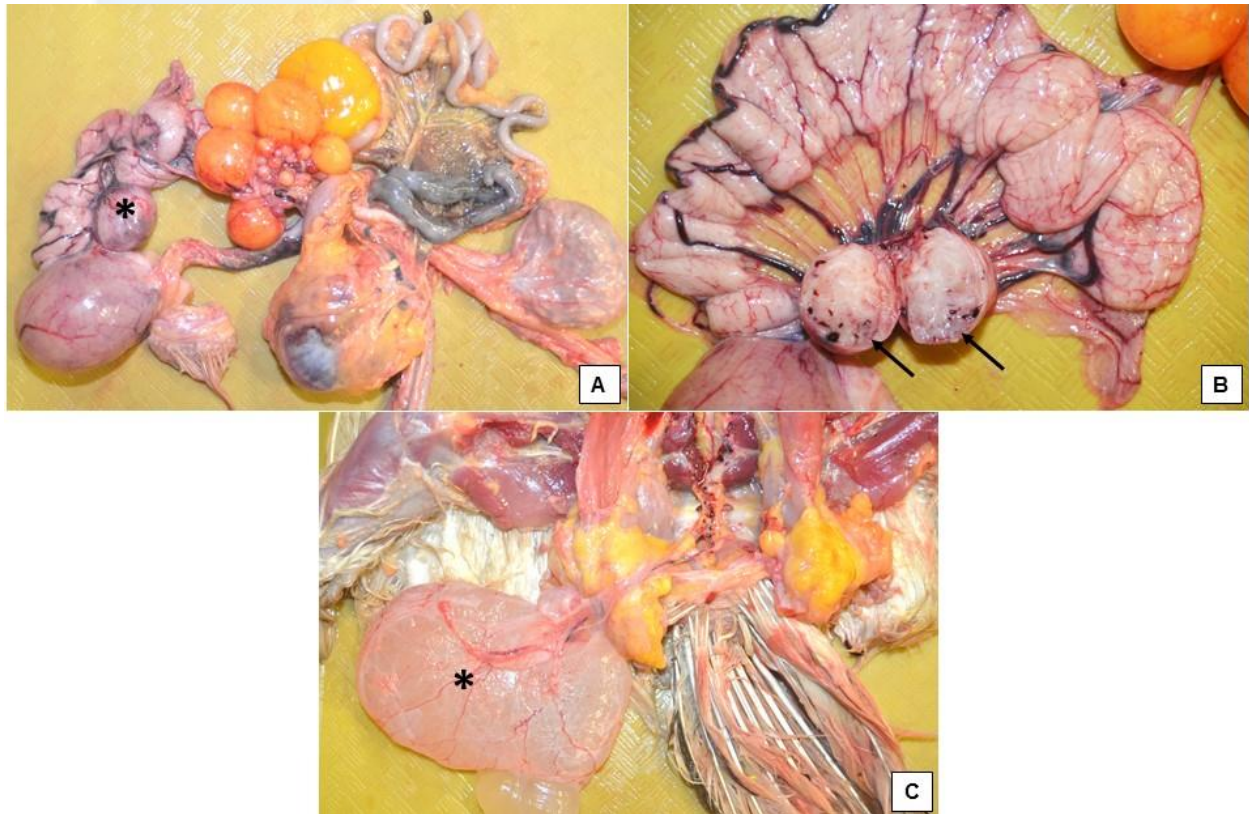
Case #: 98 Month: June Year: 2018

**Contributors:** Devika Bahal<sup>1</sup>, DVM, MS; Tatiane Terumi Negrão Watanabe<sup>2</sup>, DVM, MS, PhD; Emi Sasaki<sup>2</sup>, DVM; Kyra Berg<sup>3</sup>, BA, DVM; Javier Nevarez<sup>3</sup>, BS, DVM, PhD, DECZM, DACZM; Ingeborg M. Langohr<sup>2</sup>, BS, DVM, MS, PhD, DACVP. <sup>1</sup>Bombay Veterinary College, Mumbai, India. <sup>2</sup>Louisiana State University School of Veterinary Medicine, Department of Pathobiological Sciences and Louisiana Animal Disease Diagnostic Laboratory, Baton Rouge, LA 70803. <sup>3</sup>Louisiana State University School of Veterinary Medicine, Department of Veterinary Clinical Sciences, Baton Rouge, LA 70803.

**Clinical History:** A 2-year-old female chicken in good body condition was submitted for necropsy after euthanasia with a clinical history of lethargy, abnormal behavior, ruffled feathers, and loose stool. History available from the year before indicated the possible presence of a mass in the coelom. An ultrasound-guided aspirate revealed opaque, thick fluid from the suspected mass within the coelomic cavity. The flock, which is vaccinated against Marek's disease, had one chicken recently die due to neoplasia of the reproductive tract.

**Necropsy Findings:** A 3.0 x 2.0 x 3.6 cm, well-delimited mass is in the mesosalpinx at the level of the isthmus of the left oviduct (Figures 1A, asterisk; and 1B, arrows). The mass is firm and pale pink to tan with several prominent blood vessels throughout the capsular surface. At the level of the rudimentary right oviduct is a multilocular, thin-walled cyst that measures 14.0 x 10.0 x 2.0 cm and is filled with approximately 120 ml of cloudy white fluid (Figure 1C, asterisk).

**Gross Images:**



**Figure 1**

**Follow-up Questions:** Morphologic diagnoses and Histologic characteristics.

\*The Diagnostic Exercises are an initiative of the **Latin Comparative Pathology Group (LCPG)**, the Latin American subdivision of The Davis-Thompson Foundation. These exercises are contributed by members and non-members from any country of residence. Consider submitting an exercise! A final document containing this material with answers and a brief discussion will be posted on the CL Davis website ([http://www.cldavis.org/diagnostic\\_exercises.html](http://www.cldavis.org/diagnostic_exercises.html)).

**Associate Editor for this Diagnostic Exercise:** Ingeborg Langohr

**Editor-in-chief:** Vinicius Carreira