



# Diagnostic Exercise

## From The Davis-Thompson Foundation\*

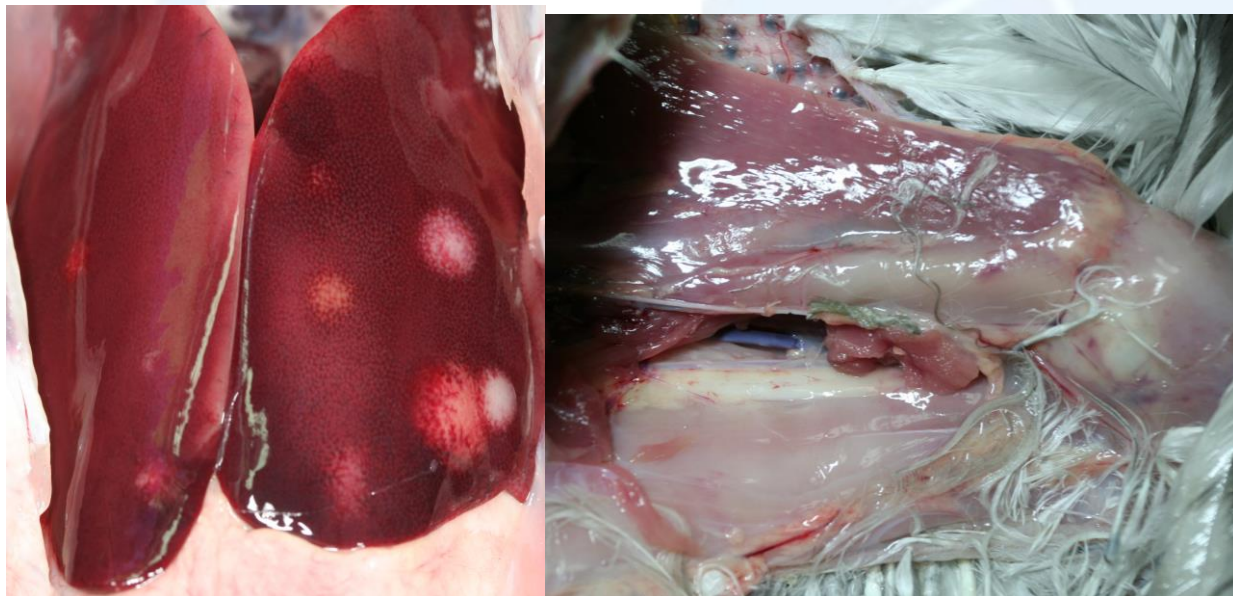
**Case #: 95 Month: April Year: 2018**

**Contributors:** Tamsen Polley, MSc UC Davis Veterinary Medicine Class of 2020, Asli Mete, DVM, PhD, DACVP Assoc. Prof. Clinical Series, UC Davis CAHFS, John E. Thurman Building, Davis, CA, School of Veterinary Medicine, University of California.

**Clinical History:** 1.5-year-old hen was euthanized and submitted for necropsy due to a two-week history of progressive lameness and limping. “T-Rex” came from a backyard flock of 40 birds obtained from different breeders. T-rex is the fourth bird from the same breeder to lose use of one or both legs. All four birds were unvaccinated.

**Necropsy Findings:** On necropsy, T-Rex was in good body condition with adequate adipose stores. Gross exam revealed tan nodules in the kidney, ovary, liver, and spleen, in addition to visible thickening in the lumbosacral plexus nerves.

**Gross images:**



**Follow-up questions:** Microscopic findings, Immunohistochemical findings, Morphologic diagnosis, Disease, Cause, Associated lesion in other organ(s).

\*The Diagnostic Exercises are an initiative of the **Latin Comparative Pathology Group (LCPG)**, the Latin American subdivision of The Davis-Thompson Foundation. These exercises are contributed by members and non-members from any country of residence. Consider submitting an exercise! A final document containing this material with answers and a brief discussion will be posted on the CL Davis website ([http://www.cldavis.org/diagnostic\\_exercises.html](http://www.cldavis.org/diagnostic_exercises.html)).

**Associate Editor for this Diagnostic Exercise:** Patricia Pesavento

**Editor-in-chief:** Vinicius Carreira