



# Diagnostic Exercise

## From The Davis-Thompson Foundation\*

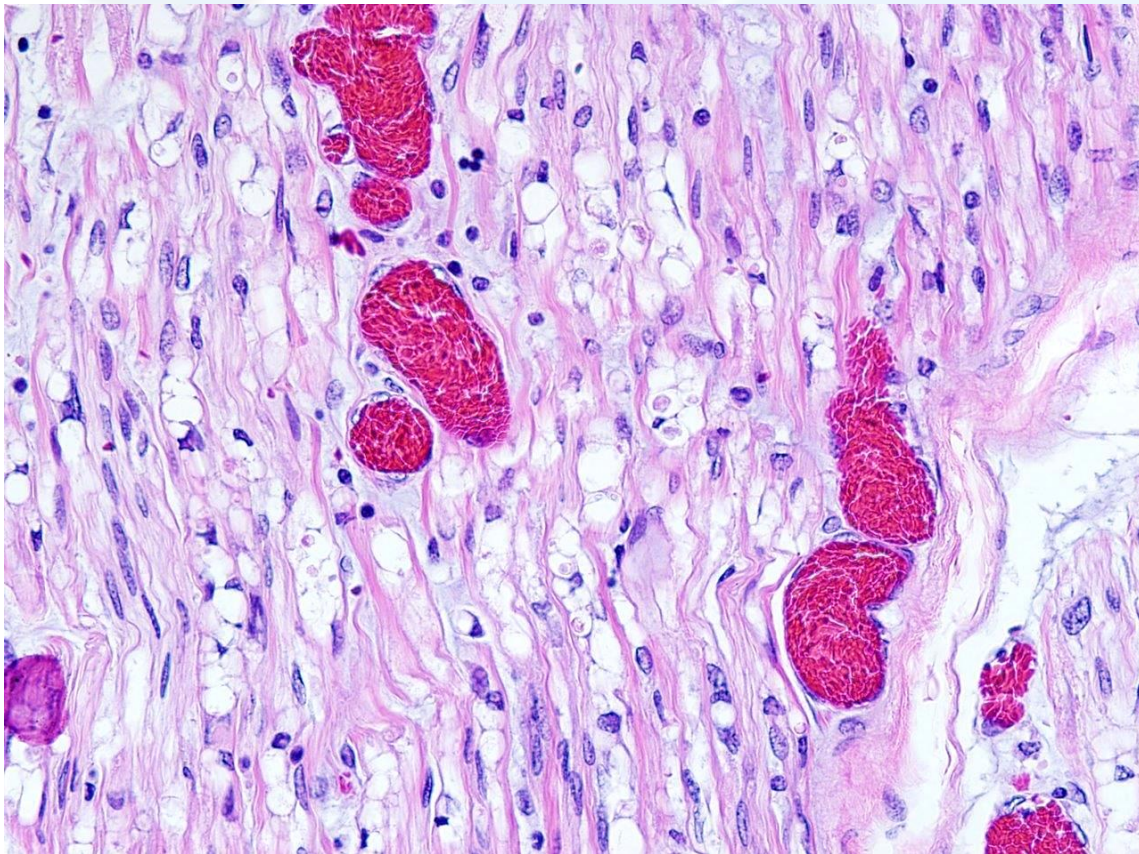
**Case #: 85 Month: October Year: 2017**

**Contributors:** Peter Chu, DVM, Dip ACVP. University of California, Davis. California Animal Health and Food Safety Laboratory System.

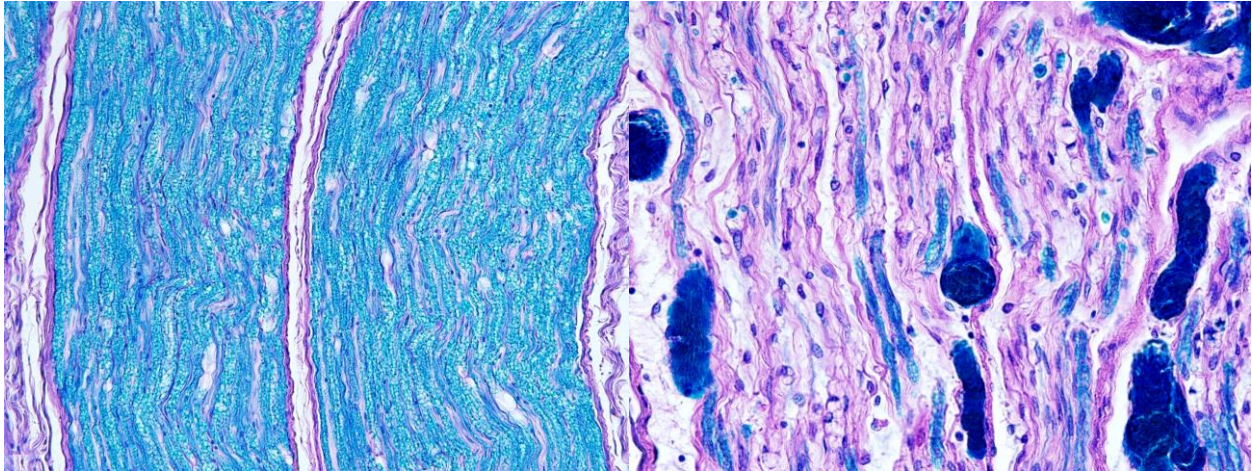
**Clinical History:** Four-month-old female Alpaca cria. Owner reported the cria being "very stiff in the chest and body" shortly before death.

**Necropsy Findings:** The cria was in fair body condition with sparse amounts of reserve fat. The lungs were bilaterally red, wet, and rubbery.

**Microscopic images:**



**Figure 1.** Alpaca cria. Phrenic nerve. Hematoxylin and eosin, 40x objective.



**Figure 2.** Alpaca cria. Sciatic nerve (left). Phrenic nerve (right). Luxol Fast Blue, 40x objective.

**Follow-up questions:** Morphologic diagnosis, associated findings in other tissues.

\*The Diagnostic Exercises are an initiative of the **Latin Comparative Pathology Group (LCPG)**, the Latin American subdivision of The Davis-Thompson Foundation. These exercises are contributed by members and non-members from any country of residence. Consider submitting an exercise! A final document containing this material with answers and a brief discussion will be posted on the CL Davis website ([http://www.cldavis.org/diagnostic\\_exercises.html](http://www.cldavis.org/diagnostic_exercises.html)).

**Associate Editor for this Diagnostic Exercise:** Santiago Diab

**Editor-in-chief:** Vinicius Carreira