



# Diagnostic Exercise

## From The Davis-Thompson Foundation\*

Case #: 70 Month: July Year: 2016

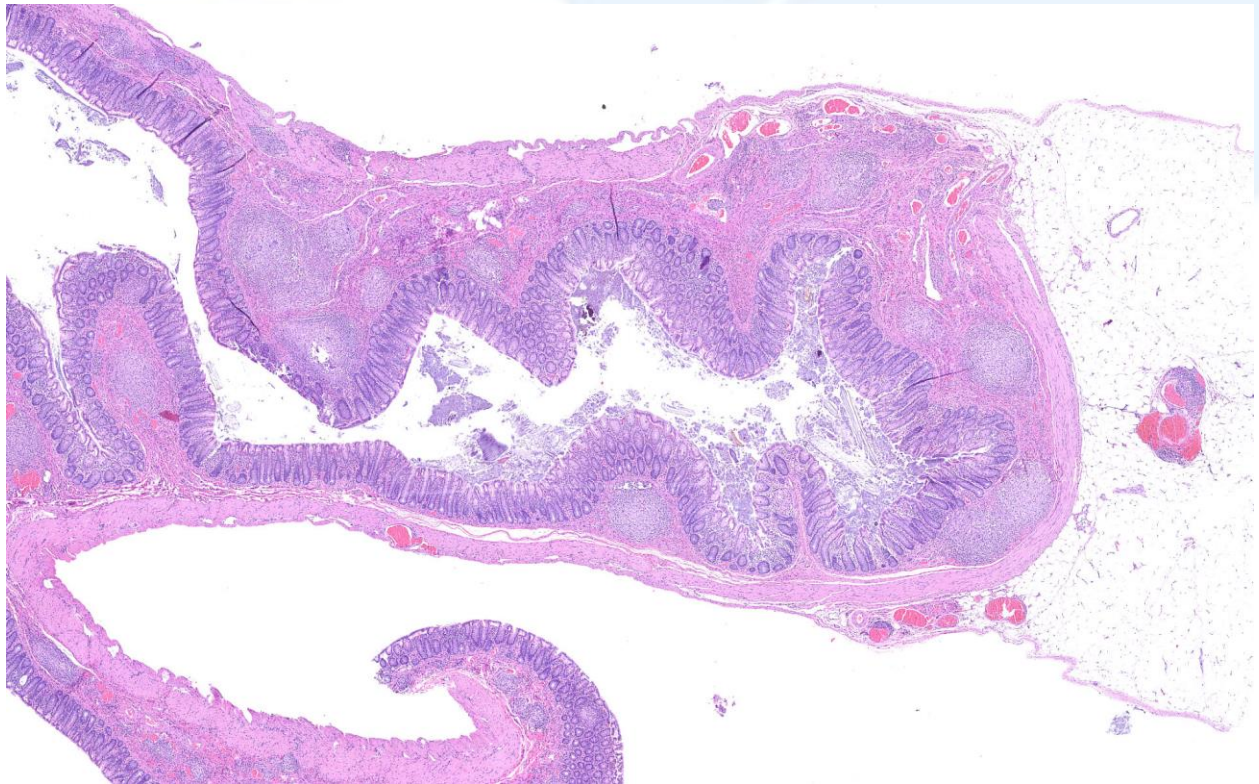
**Contributors:** Catherine Picut, VMD, JD, DACVP, DABT, Senior Pathologist at Charles River Laboratories, Durham, North Carolina, USA.

**Clinical History:** 20-week-old, control Sprague Dawley rat from a 3-month gavage safety study that was euthanized as scheduled at end of study.

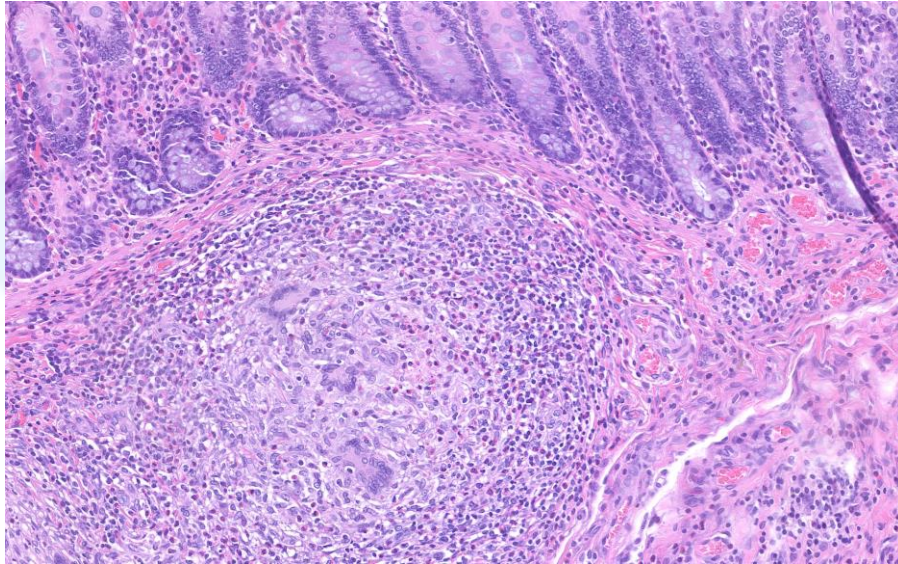
**Laboratory Findings:** Final body weight 512 g (mean for control group was 621 g).

**Necropsy Findings:** Irregular thickening of the wall of cecum.

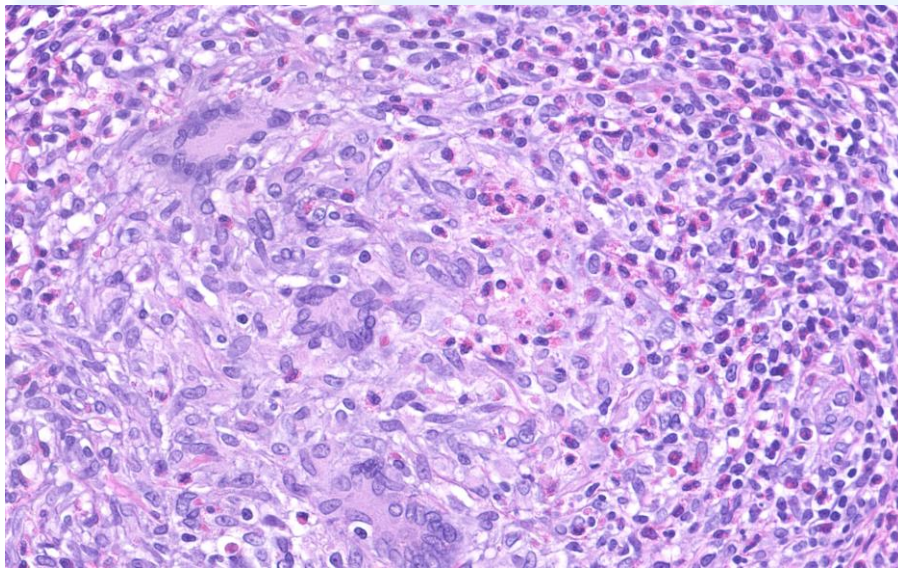
**Gross and/or microscopic image(s):**



**Figure 1.** Cecum, Rat, H&E, 2.29x objective magnification.



**Figure 2.** Cecum, Rat, H&E, 20x objective magnification.



**Figure 3.** Cecum, Rat, H&E. 47x objective magnification.

**Follow-up questions:** Morphologic diagnosis, Cause, Associated lesion in other organ(s),

\*The Diagnostic Exercises are an initiative of the **Latin Comparative Pathology Group (LCPG)**, the Latin American subdivision of The Davis-Thompson Foundation. These exercises are contributed by members and non-members from any country of residence. Consider submitting an exercise! A final document containing this material with answers and a brief discussion will be posted on the CL Davis website ([http://www.cldavis.org/diagnostic\\_exercises.html](http://www.cldavis.org/diagnostic_exercises.html)).

**Associate Editor for this Diagnostic Exercise:** Ingeborg Langohr

**Editor-in-chief:** Vinicius Carreira