



Diagnostic Exercise

From The Davis-Thompson Foundation*

Case #: 67 Month: April Year: 2016

Contributors: Mariana Martins Flores,* DVM, MS, PhD candidate; Rafael Ebling,** Large Animal Medicine Resident; Rafael Figuera,* DVM, Doctor in Veterinary Pathology, Member of the Brazilian College of Animal Pathology (CBPA). *Laboratory of Veterinary Pathology, Universidade Federal de Santa Maria (UFSM), Santa Maria, Rio Grande do Sul, Brazil.**Large Animal Clinic, Universidade Federal de Santa Maria (UFSM), Santa Maria, Rio Grande do Sul, Brazil.

Clinical History: This 3-week-old female calf was found down and severely prostrated. It died hours later after presenting to the UFSM veterinary hospital.

Necropsy Findings: At necropsy, the ocular and oral mucous membranes were diffusely and markedly pale. The spleen was moderately enlarged and, on cut surface, had a dry and fleshy appearance. The liver was slightly enlarged and diffusely orange. The lungs were dark red, had a wet appearance, and did not collapse when opening the thoracic cavity. The gray matter of the brain was diffusely pink (Fig.1, Fig.2). A smear of fresh brain tissue was prepared during necropsy and stained following a routine Diff Quick cytological technique (Fig.3).

Gross image(s):



Figure 1



Figure 2

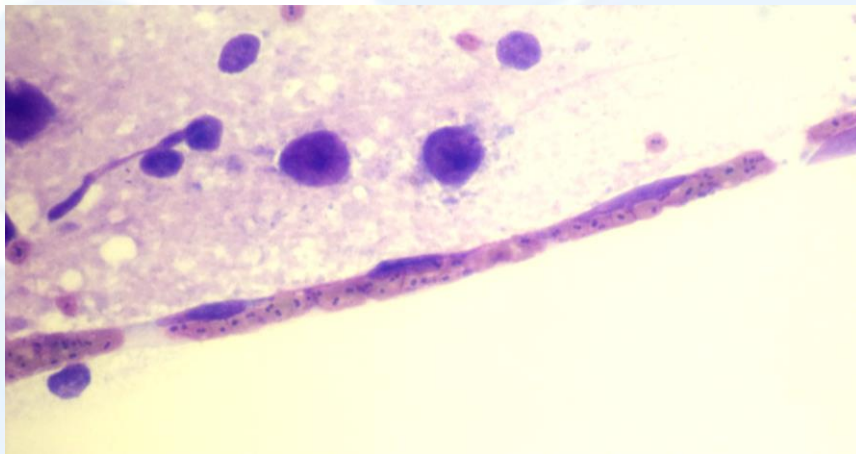


Figure 3. Diff Quick staining. Obj. 40X.

Follow-up questions: Morphologic diagnosis, cause, associated clinical pathology finding.

*The Diagnostic Exercises are an initiative of the **Latin Comparative Pathology Group (LCPG)**, the Latin American subdivision of The Davis-Thompson Foundation. These exercises are contributed by members and non-members from any country of residence. Consider submitting an exercise! A final document containing this material with answers and a brief discussion will be posted on the CL Davis website (http://www.cldavis.org/diag_exercise.html).

Associate Editor for this Diagnostic Exercise: Mariana M. Flores

Editor-in-chief: Vinicius Carreira