

# Latin Comparative Pathology Group

## The Latin Subdivision of the CL Davis Foundation

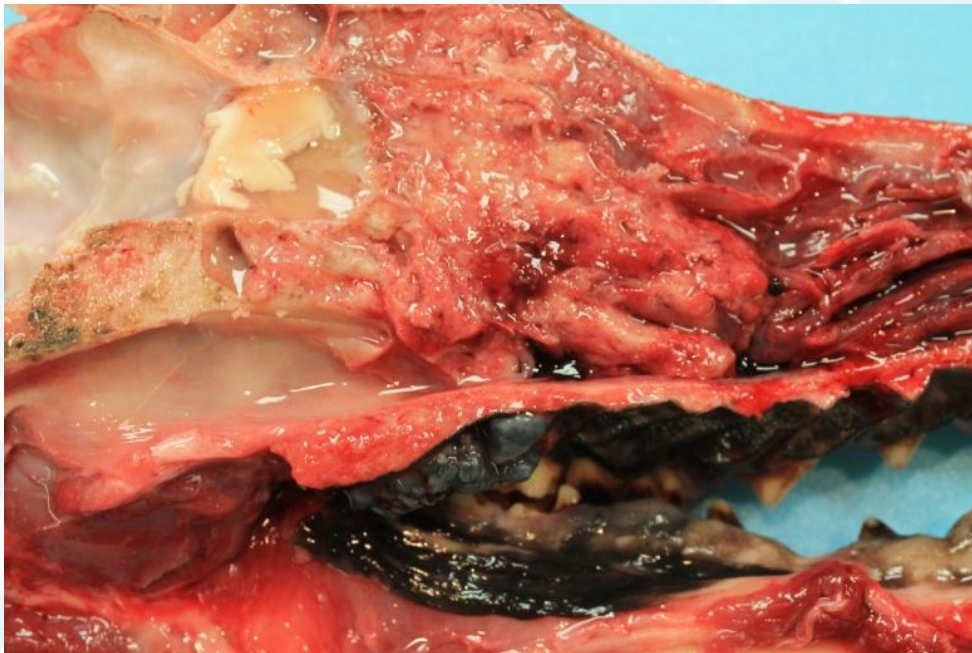
### Diagnostic Exercise

**Case #: 59 Month: August Year: 2015**

**Contributor:** Tatiane Terumi Negrão Watanabe DVM, MS, PhD (visiting veterinarian) and Melissa D. Sánchez, VMD, PhD, DACVP – School of Veterinary Medicine, University of Pennsylvania, Philadelphia, PA, USA.

**Clinical History:** A 10-year-old, female spayed, Irish Terrier dog was presented for acute onset of severe epistaxis from the left nares. The patient had episodes of dry cough a few months prior to presentation. Euthanasia was elected due to poor prognosis after computed tomography evaluation.

**Necropsy Findings:**



**Figure 1**

**Follow-up questions:** Gross description(s); Morphologic diagnosis(es); Differential diagnosis(es).

Please send your comments/questions to the whole LCPG list by hitting “reply to all”.

A final document containing this material with answers and a brief discussion will be posted on the C. L. Davis website by the end of the current month ([http://www.cldavis.org/lcpg\\_english.html](http://www.cldavis.org/lcpg_english.html)).