



# Latin Comparative Pathology Group

## The Latin Subdivision of the CL Davis Foundation

### Diagnostic Exercise

**Case #: 58 Month: July Year: 2015**

**Contributor:** Megan A. McCarthy, DVM, Anatomic Pathology Resident, Level III; Dennis Wilson, DVM, PhD, DACVP, Verena K Affolter, DVM, PhD, DECVP. University of California, Davis, School of Veterinary Medicine, 1 Shields Avenue, Davis, CA 95616,

**Clinical History:** This was a 9-year-old female spayed German shepherd dog that was first presented approximately four months prior to necropsy for intermittent left pelvic limb lameness and a 7.0-cm-diameter intramuscular mass of the left proximal thigh. Upon physical exam, additional dermal nodules were identified, and abdominal ultrasound identified polycystic kidneys bilaterally. Euthanasia was elected after a few weeks of palliative care due to progressive inappetence and diminished quality of life.

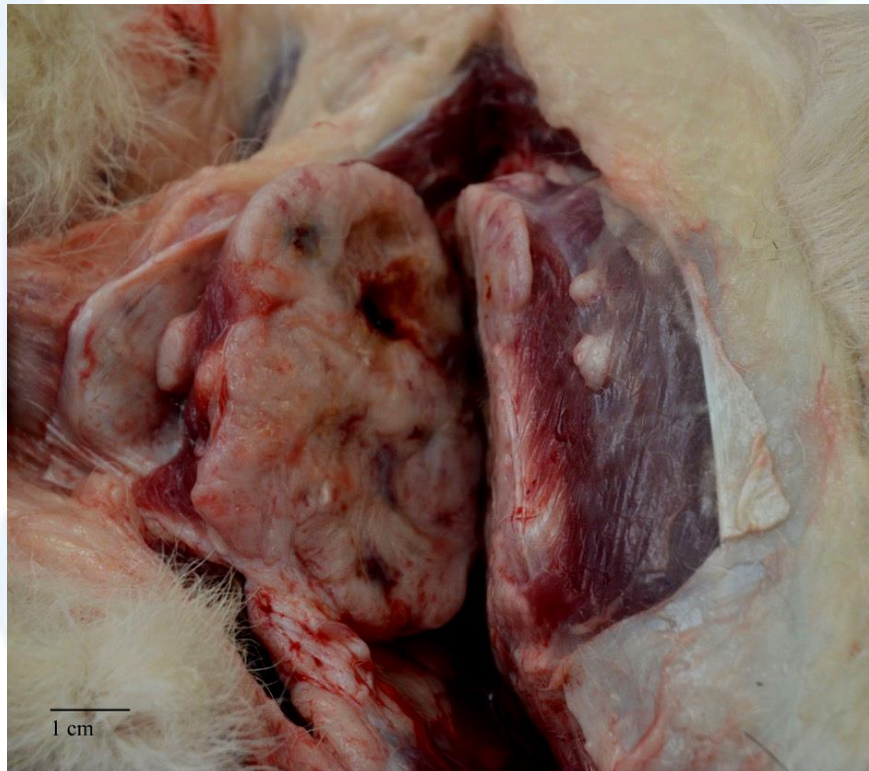
**Necropsy Findings:** Bilaterally, the kidneys were enlarged, with irregular, multinodular cortical surfaces. On cut section, the renal parenchyma was interrupted and largely replaced by multifocal to coalescing fluid-filled cavities, ranging from 0.3 to 4.0 cm in diameter. There were also multiple firm, solid, white to tan nodules (0.5 to 1.5 cm in diameter) in the remnant renal parenchyma and lining cyst walls. Similar nodules were distributed throughout the lungs. Approximately ten, firm, subcutaneous nodules were distributed over the body, ranging from 0.5 to 1.4 cm in diameter. On the cranio-lateral aspect of the left thigh, a 7.0 x 7.0 x 5.0 cm, firm, multilobular mass extended from the dermis through the subcutis, and infiltrated the sartorius and biceps femoris muscles. On cut section this mass was firm, solid, and mottled tan and pink, with multiple fluid-filled cavities measuring up to 1.0 cm in diameter.

**Gross and microscopic image:** *Please see Figures 1 and 2 on the next page.*

**Follow-up questions:** *Morphologic diagnoses, Associated genetic alteration*



**Figure 1**



**Figure 2**

Please send your comments/questions to the whole LCPG list by hitting "reply to all".

A final document containing this material with answers and a brief discussion will be posted on the C. L. Davis website by the end of the current month ([http://www.cldavis.org/lcpg\\_english.html](http://www.cldavis.org/lcpg_english.html)).

L  
P  
D  
C  
L  
G

