



Latin Comparative Pathology Group

The Latin Subdivision of the CL Davis Foundation

Diagnostic Exercise

Case #: 55 Month: April Year: 2015

Contributor: Akinyi Nyaoke BVM, MSc, PhD. California Animal Health and Food Safety Laboratory, University of California Davis. 105 W Central Ave, San Bernardino, CA 92408.

Clinical History: A 37-kg, stillborn, chestnut Quarter horse filly from a surrogate mare with no history of prior illness presented to necropsy. The mare went into labor 2 weeks prior to due date.

Necropsy Findings: The foal had a crown-to-rump length of 101.7 cm; cranial features and limbs were well proportioned. Carcass was in good post-mortem state with minimal internal fat reserves. Both lungs were deep red, heavy and wet, and samples of the lung sank in 10% formalin. Liver was diffusely deep red and there were few linear streaks of hemorrhage in the papillary muscle of the heart, and scattered pinpoint hemorrhages in the cerebellum. All other viscera and submitted fetal membranes with placenta were macroscopically normal.

Gross images: Based on the following Figures 1 and 2 (hematoxylin and eosin-stained sections of heart, papillary muscle), please provide: a. Morphologic diagnosis and b. Possible etiologies.

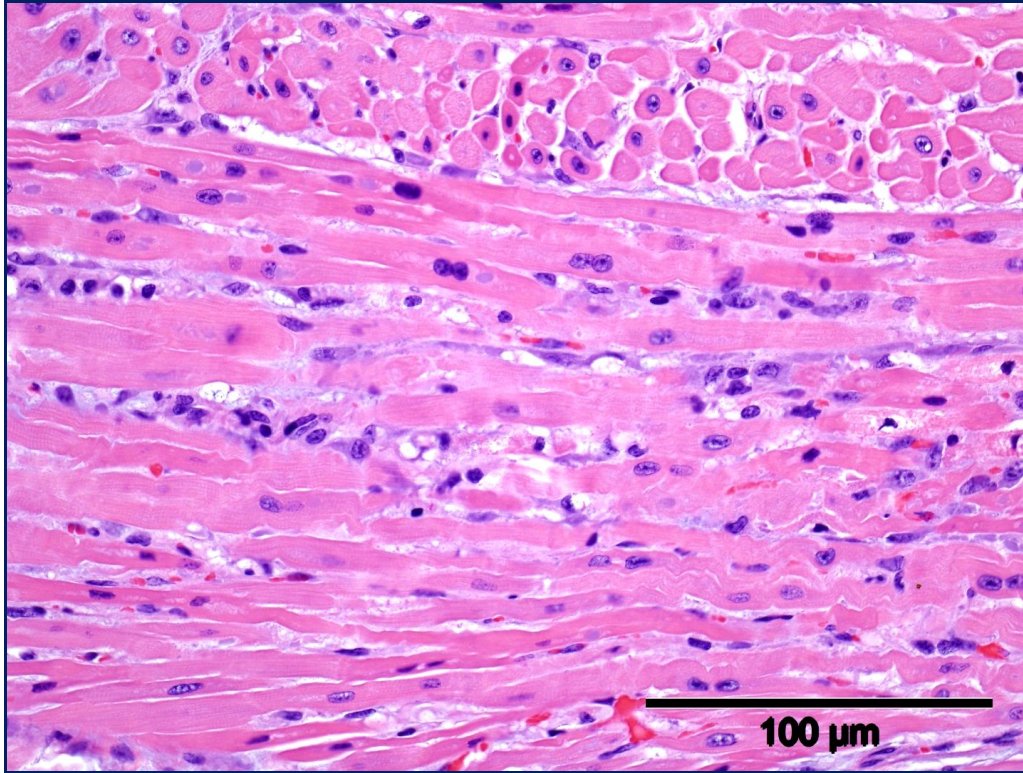


Figure 1

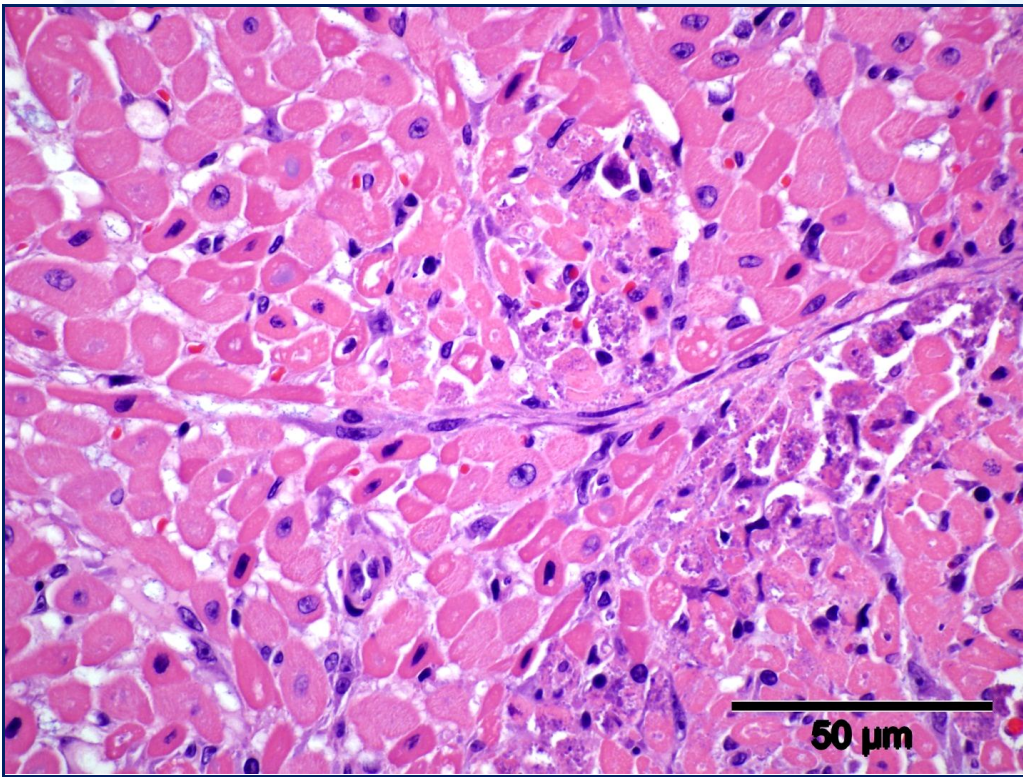


Figure 2

Please send your comments/questions to the whole LCPG list by hitting "reply to all".

A final document containing this material with answers and a brief discussion will be posted on the C. L. Davis website by the end of the current month (http://www.cdavis.org/lcpg_english.html).

G
P
D
C
L

