



Latin Comparative Pathology Group

The Latin Subdivision of the CL Davis Foundation

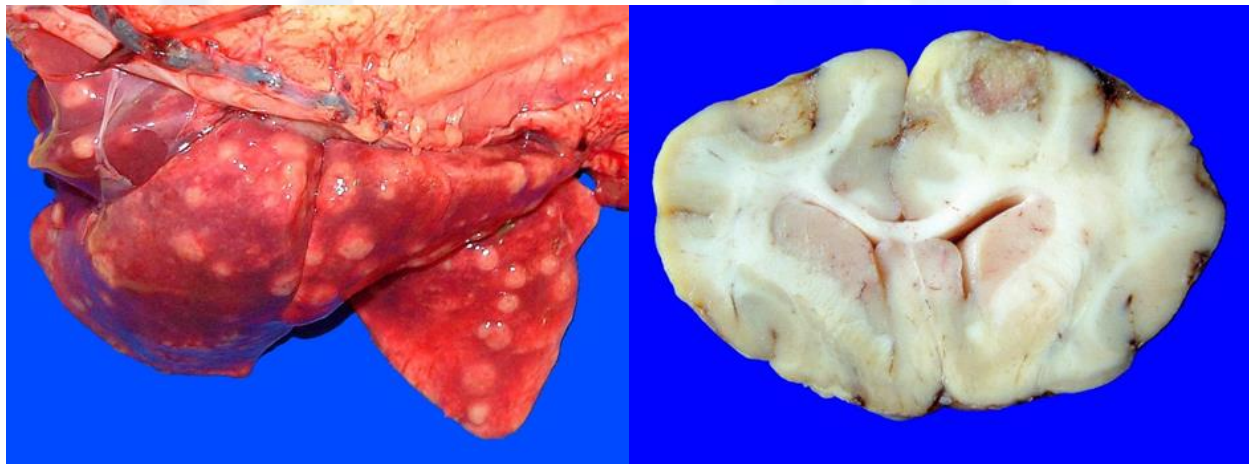
Diagnostic Exercise

Case #: 52 Month: January Year: 2015

Contributor: L. P. Mesquita¹, D. R. Orlando¹, A. C. Lacreata¹, G. R. Sampaio¹, A. Lim², S. Bolin², I. M. Langohr², P. S. Bezerra Jr., M. S. Varaschin^{1*} - 1) *Departamento de Medicina Veterinária, Universidade Federal de Lavras, Lavras, Minas Gerais, Brazil.* *Corresponding author: mvaraschin@dmv.ufla.br; 2) *Diagnostic Center for Population and Animal Health, Michigan State University, Lansing, MI, USA.*

Clinical History: A seven-year-old male Yorkshire terrier presented with recurrent seizures and respiratory distress and died after surgical excision of a nodule detected by ultrasound examination. The nodule was determined to be the right renal lymph node. Four months prior to this event the dog had chronic dermatitis with alopecia and crusts on the chest, flank, neck and pelvic limbs. The animal had been treated for demodicosis, mycotic infection and flea-bite hypersensitivity dermatitis; lesions had since resolved.

Gross and/or microscopic image:



Follow-up questions: Gross description, morphologic diagnosis, differential diagnoses.

Please send your comments/questions to the whole LCPG list by hitting "reply to all".

A final document containing this material with answers and a brief discussion will be posted on the C. L. Davis website by the end of the current month (http://www.cldavis.org/lcpg_english.html).

G
P
D
C
L

