



# Latin Comparative Pathology Group

## The Latin Subdivision of the CL Davis Foundation

### Diagnostic Exercise

Case #: 43 Month: April Year: 2014

**Contributor:** Ana Alcaraz from CVM Western University of Health Sciences, Pomona CA 91766.

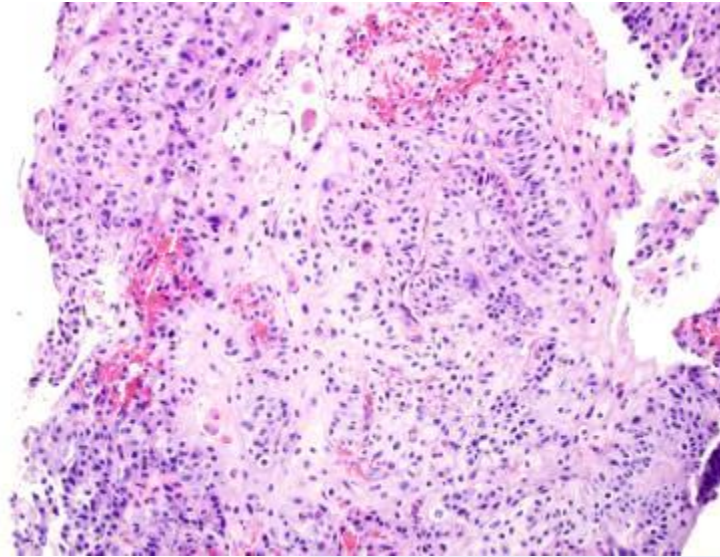
**Clinical History:** 13-year-old quarter/paint mare used for recreational riding. The horse has lived in California all her life. In September 2013 a small nodule was noticed in her left eye (Fig. 1). The owner reported progressive growth so a biopsy was taken (Fig. 2 through 4).



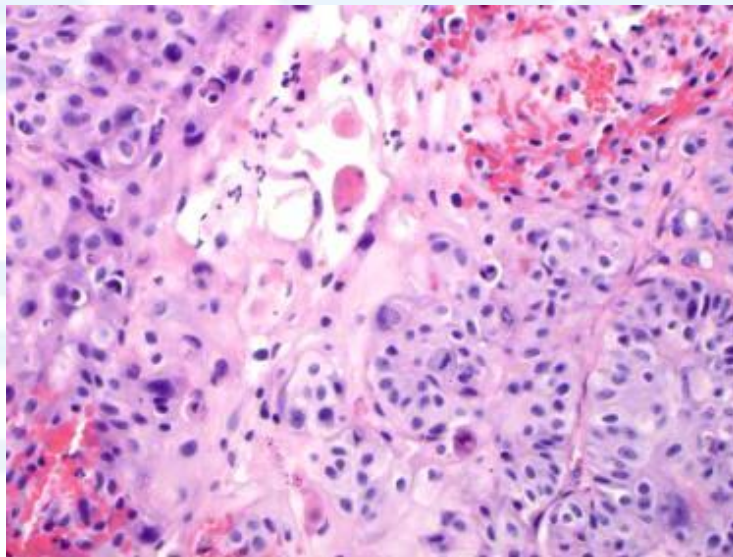
Fig 1. Left eye. 0.7 cm nodule.



Fig 2. Subgross image, H&E stain. 2mm biopsy sample.



**Fig 3.** 20x H&E stain



**Fig 4.** 40x H&E stain

**Follow-up questions:** Description (1) and morphologic diagnosis (2).

Please send your comments/questions to the whole LCPG list by hitting "reply to all".

A final document containing this material with answers and a brief discussion will be posted on the C. L. Davis website by the end of the current month ([http://www.cldavis.org/lcpg\\_english.html](http://www.cldavis.org/lcpg_english.html)).