



# Latin Comparative Pathology Group

## The Latin Subdivision of the CL Davis Foundation

### Diagnostic Exercise

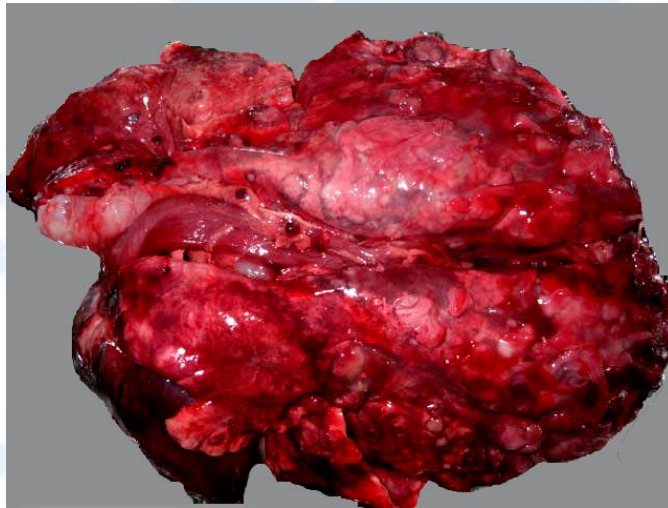
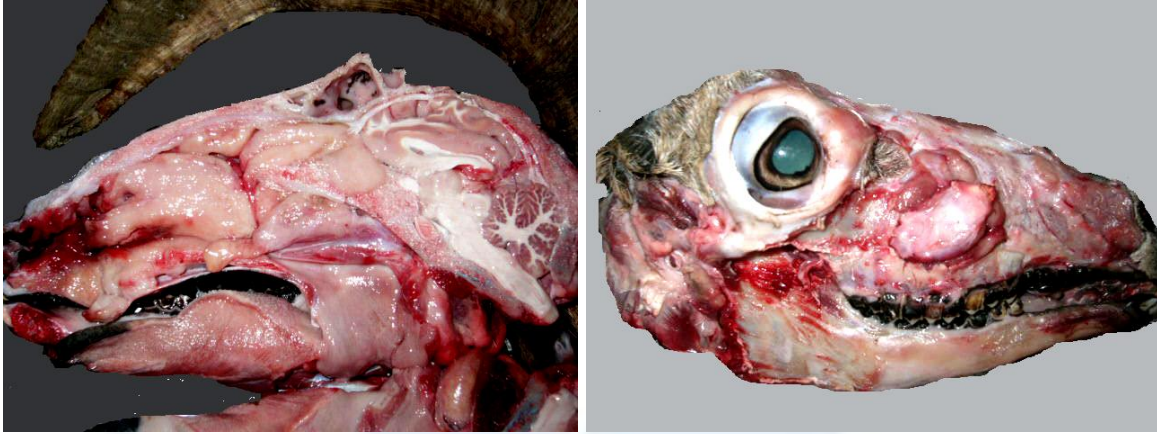
Case #: 42 Month: March Year: 2014

**Contributor:** Panayiotis Loukopoulos<sup>1, 2</sup> DVM, PGDipVSt, PhD; Nikolaos Kassinis<sup>3</sup>BSc, MSc (Wildl); Chrysostomos I. Dovas<sup>2</sup> BSc (Agr), MSc, PhD; Fransisco. A. Uzal,<sup>1</sup> DVM, MSc, PhD, DACVP; and Loannis Loannou<sup>3</sup> DVM, PhD  
1 California Animal Health and Food Safety Lab- San Bernardino branch, University of California Davis, USA; 2 Aristotle University, Thessalonica, Greece; 3 Cyprus Game Fund Service 3Cyprus Veterinary Services, Ministry of Agriculture, Natural Resources and Environment, Cyprus.

**Clinical History:** A free-ranging 3-year-old male agrino or Cypriot mouflon (*Ovis orientalis ophion*) found dead by game wardens in a forest in northwest Cyprus. The Cypriot mouflon is a wild sheep species inhabiting forested mountainous areas.

**Gross images:**





**Follow-up questions:** Please provide (a) morphologic diagnoses and (b) likely differentials/etiology.

Please send your comments/questions to the whole LCPG list by hitting "reply to all".

A final document containing this material with answers and a brief discussion will be posted on the C. L. Davis website by the end of the current month ([http://www.cldavis.org/lcpg\\_english.html](http://www.cldavis.org/lcpg_english.html)).