



# Latin Comparative Pathology Group

## The Latin Subdivision of the CL Davis Foundation

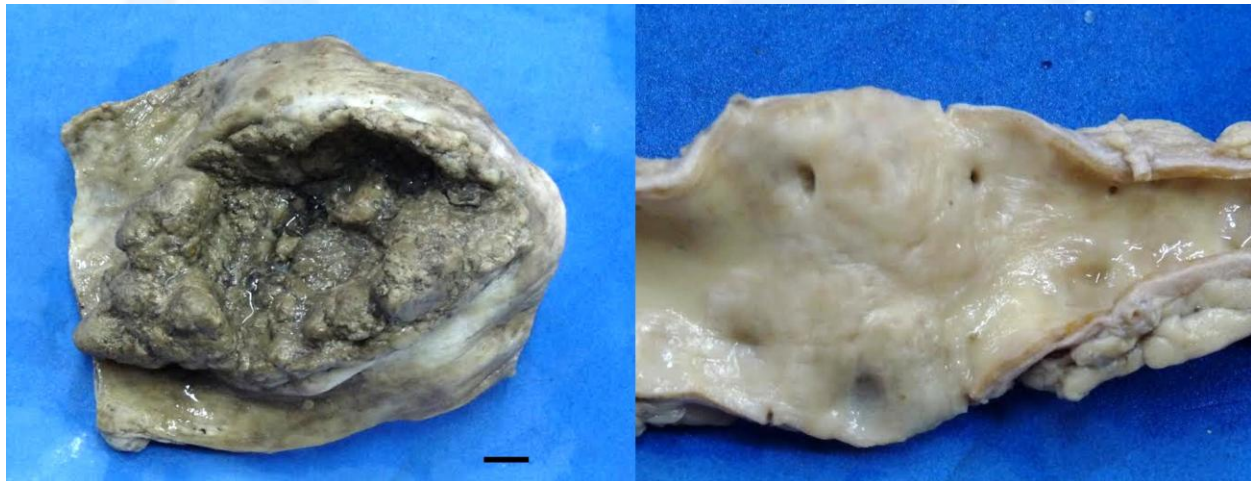
### Diagnostic Exercise

**Case #: 41 Month: February Year: 2014**

**Contributor:** Francisco R. Carvalho from the California Animal Health & Food Safety Laboratory, San Bernardino Branch, University of California, Davis (email: [fcarvalho@cahfs.ucdavis.edu](mailto:fcarvalho@cahfs.ucdavis.edu))

**Clinical History:** Male, non-castrated, 6.5-year-old Labrador, which had arrived to Chile from Venezuela a few months ago. The animal developed progressive regurgitation, dyspnea and exercise intolerance. At clinical examination, the animal was thin with dry coughing and submandibular lymphadenomegaly. The thoracic limbs were edematous and painful on palpation. Blood work revealed nonregenerative hypochromic normocytic anemia, leukocytosis with neutrophilia, hypoproteinemia with hypoalbuminemia, hypercalcemia and increased alkaline phosphatase. The urinalysis was unremarkable. Due to poor prognosis, the animal was euthanized.

**Gross and/or microscopic image:**



**Figure 1 (left):** Distal portion of the esophagus (formalin-fixed). Bar: 1 cm. **Figure 2 (right):** Thoracic aorta (formalin-fixed).

**Follow-up questions:** Morphologic diagnosis for each figure, cause, pathogenesis, and microscopic findings.

\* **Acknowledgement:** This case is contributed from the Small Animal Medicine Specialty Program, University of Chile.

The following professionals were involved in and contributed equally to the development of this case (alphabetical order): Sonia Anticevic, Francisco Carvallo, Fernando Fredes, Paola Ledesma, Loreto Munoz, Daniel Saez, Alicia Valdes.

Please send your comments/questions to the whole LCPG list by hitting "reply to all".

A final document containing this material with answers and a brief discussion will be posted on the C. L. Davis website by the end of the current month ([http://www.cldavis.org/lcpg\\_english.html](http://www.cldavis.org/lcpg_english.html)).