

Latin Comparative Pathology Group

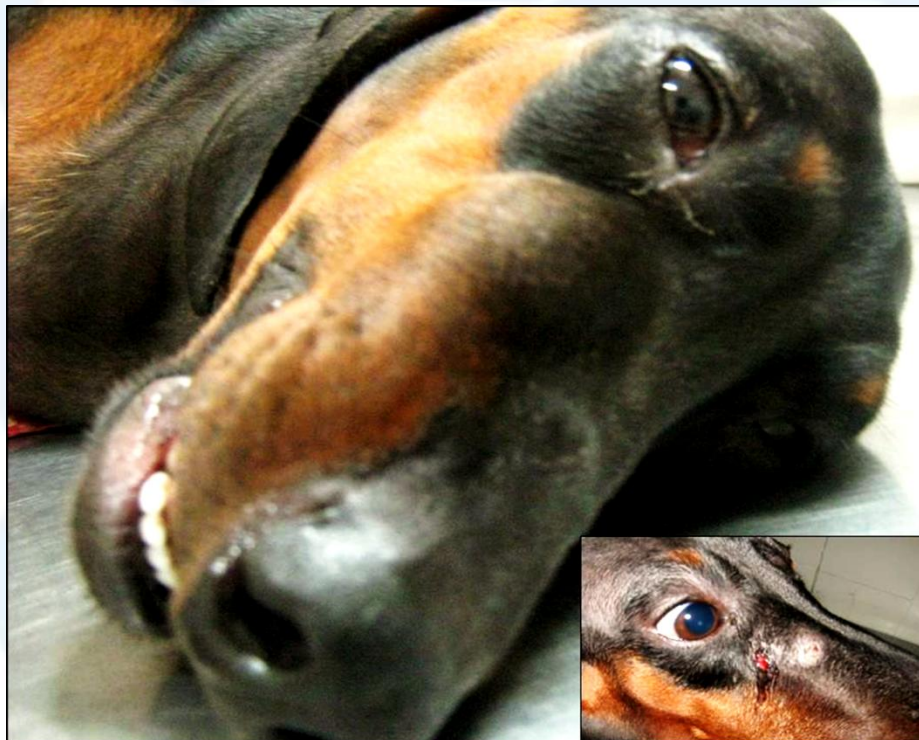
The Latin Subdivision of the CL Davis Foundation

Diagnostic Exercise

Case #: 39 Month: December Year: 2013

Contributors: Heitor Flavio Ferrai, DVM PhD; Analy Ramos Mendes, DVM - Universidade Estadual de São Paulo, Aracatuba - SP, Brazil

Clinical History: A 7-year-old male intact dog presented with weight loss and a few days history of nasal hemorrhagic discharge and nasal swelling (image below) that became ulcerated. Also noted at physical examination were multiple, markedly enlarged superficial lymph nodes.



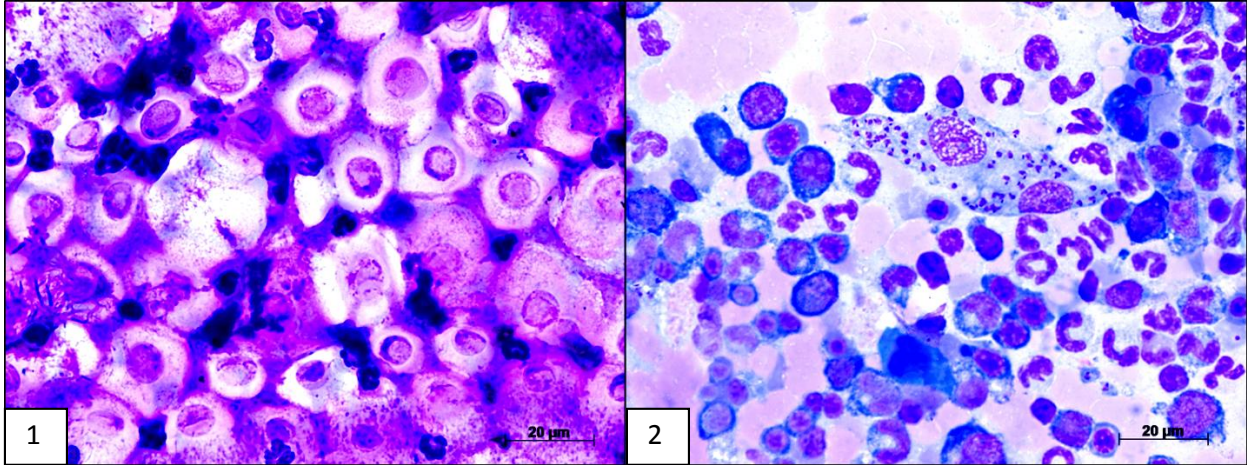


Figure 1. Nasal swelling aspirate cytology smear. Panoptic stain. 40x; **Figure 2.** Bone marrow aspirate cytology smear. Panoptic stain. 40x.

Follow-up questions (images 1 and 2): cytological description, etiologies, etiological diagnosis.

Please send your comments/questions to the whole LCPG list by hitting "reply to all".

A final document containing this material with answers and a brief discussion will be posted on the C. L. Davis website by the end of the current month (http://www.cldavis.org/lcpg_english.html).