

Latin Comparative Pathology Group

The Latin Subdivision of the CL Davis Foundation

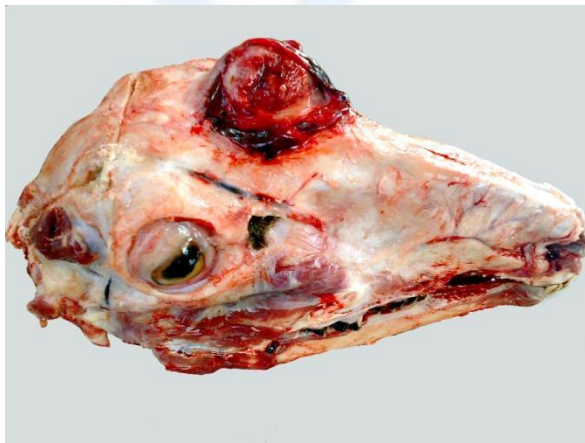
Diagnostic Exercise

Case #: 36 Month: September Year: 2013

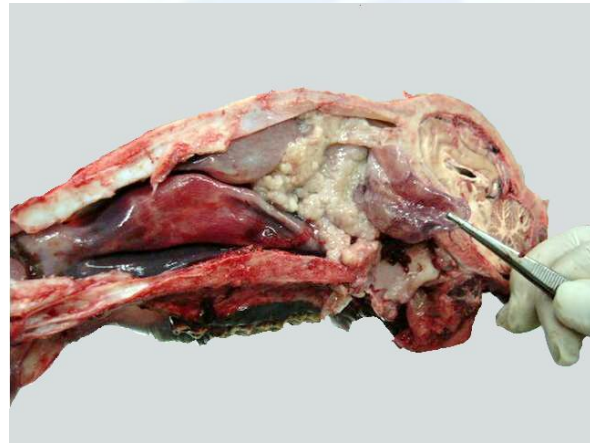
Contributors: Panayiotis Loukopoulos^{1,2}, DVM, PhD; Ioannis Ioannou³ DVM, PhD - 1 California Animal Health and Food Safety Lab- San Bernardino branch, University of California Davis, USA; 2 Aristotle University, Thessalonica, Greece; 3 Cyprus Veterinary Services, Ministry of Agriculture, Natural Resources and Environment, Cyprus.

Signalment: Five female sheep (two shown) aged 15-40 months from a mixed flock at the Paphos district, Cyprus, comprised of 300 Chios sheep and 170 local breed goats.

History/clinical signs: Facial asymmetry, exophthalmus, progressive inspiratory dyspnea, open mouth breathing, sneezing, snoring and constant seromucous exudation were noted during the initial clinical examination; according to the flock carers, the signs were present for the previous 2-3 months.



A



B

Follow-up questions: Please provide (a) morphologic diagnoses, (b) likely histologic findings (for B) and (c) etiology.

Please send your comments/questions to the whole LCPG list by hitting "reply to all".

A final document containing this material with answers and a brief discussion will be posted on the C. L. Davis website by the

end of the current month (http://www.ctdavis.org/lcpg_english.html)