



Latin Comparative Pathology Group

The Latin Subdivision of the CL Davis Foundation

Diagnostic Exercise

Case #: 34 Month: July Year: 2013

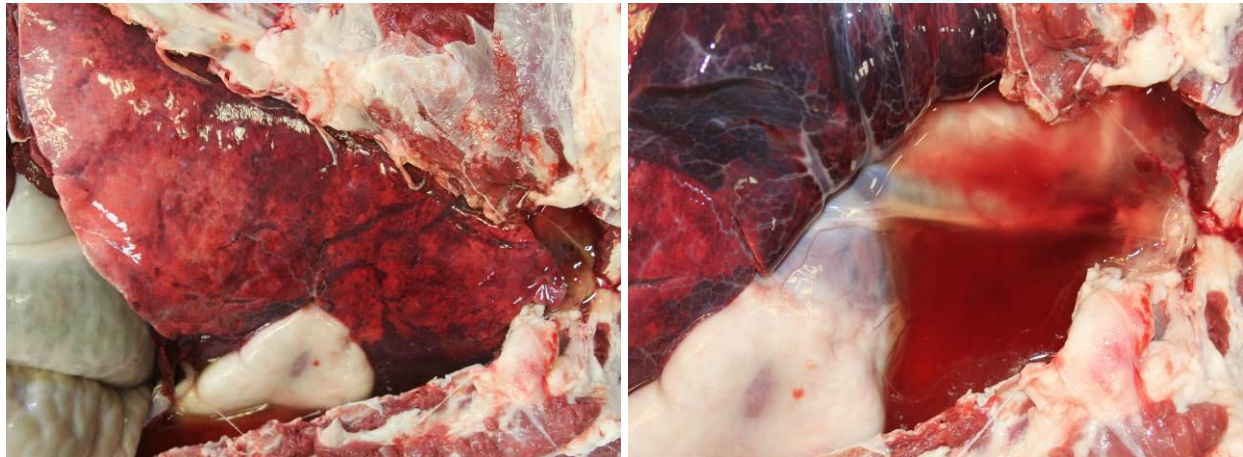
Contributor: Santiago S. Diab, DVM, DipACVP. University of California, Davis. California Animal Health and Food Safety Laboratory, San Bernardino branch.

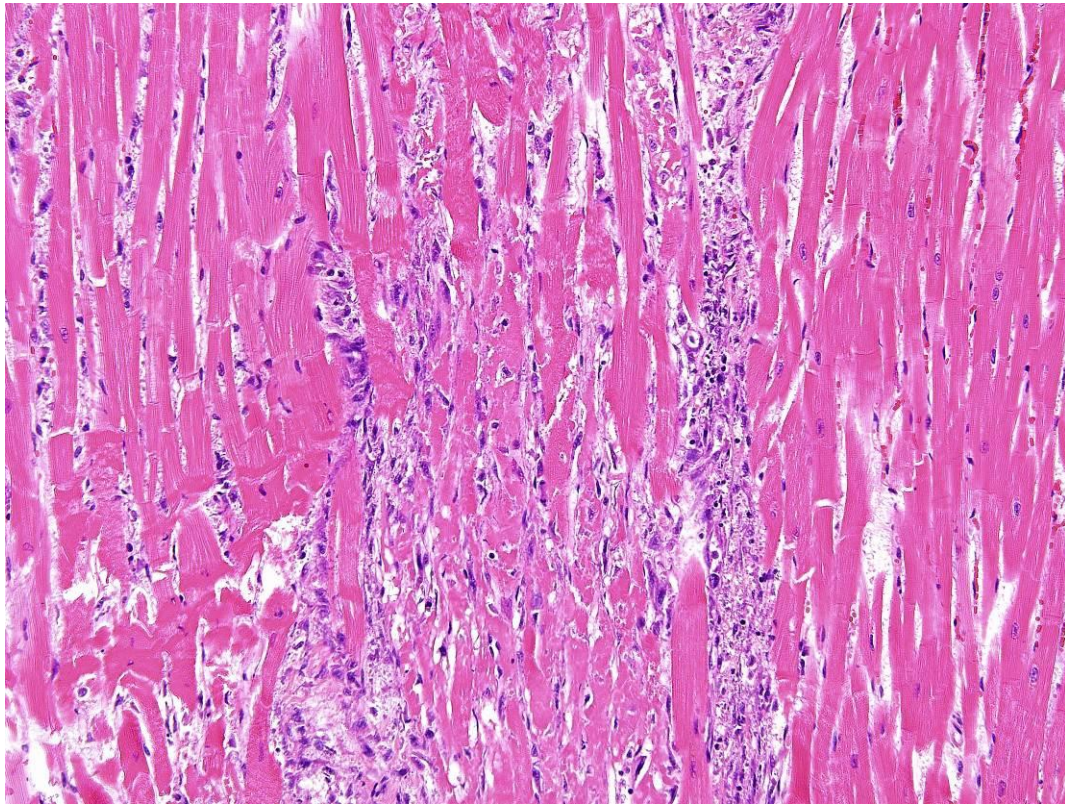
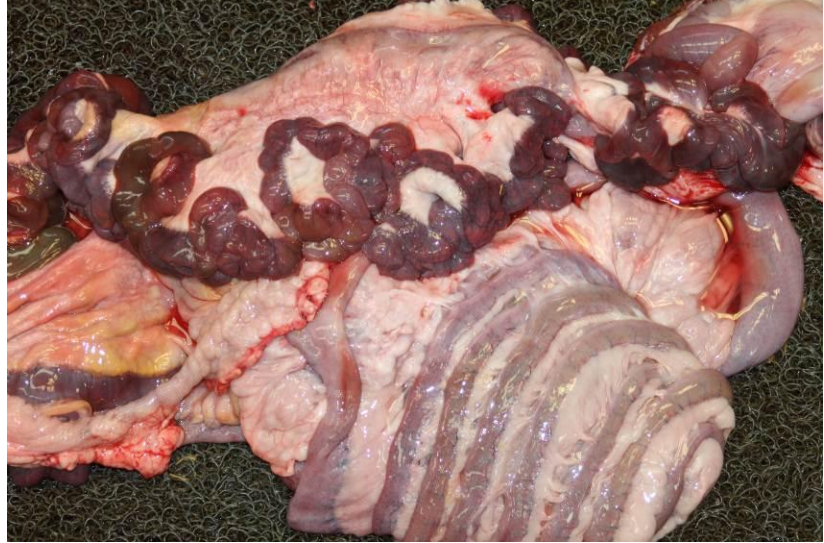
Clinical History: Adult llama with acute onset of severe respiratory distress and death 2 days later despite supportive care. During a 3-4 day period, other adult llamas in the premise also showed respiratory distress and some were markedly lethargic or had diarrhea. Most affected animals died within 2-3 days.

Laboratory Findings: Clinical pathology was suggestive of renal failure (marked azotemia) in one animal.

Necropsy Findings: See gross photos.

Gross and/or microscopic image:





Heart. H&E stain, 20x.

Follow-up questions:

Morphologic diagnosis (heart, lung, small intestine):

Possible cause/s:

Other frequently affected organ:

Associated clinical pathology:

Please send your comments/questions to the whole LCPG list by hitting "reply to all".

A final document containing this material with answers and a brief discussion will be posted on the C. L. Davis website by the end of the current month (http://www.cldavis.org/lcpg_english.html).