



Latin Comparative Pathology Group

The Latin Subdivision of the CL Davis Foundation

Diagnostic Exercise

Case #: 30 Month: March Year: 2013

Contributor: Ana Alcaraz, DVM DACVP - CVM Western University of Health Sciences, Pomona CA 91766.

History: 3-year-old male llama with a one-year history of progressive, mildly pruritic, seborrheic skin problems. The skin condition progressed from seborrheic, crusty dermatitis to crusty, alopecic, occasional ulcerated dermatitis. The animal was found dead in the stall. The postmortem examination revealed generalized skin lesions and severe fibrinous peritonitis.



Figure 1 and 2 – Haired skin of he head (1) and inguinal area (2)

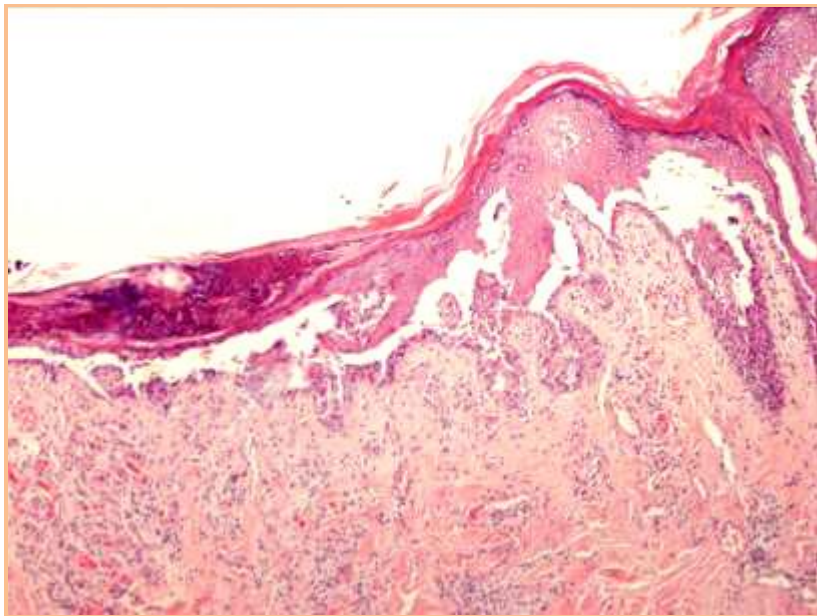
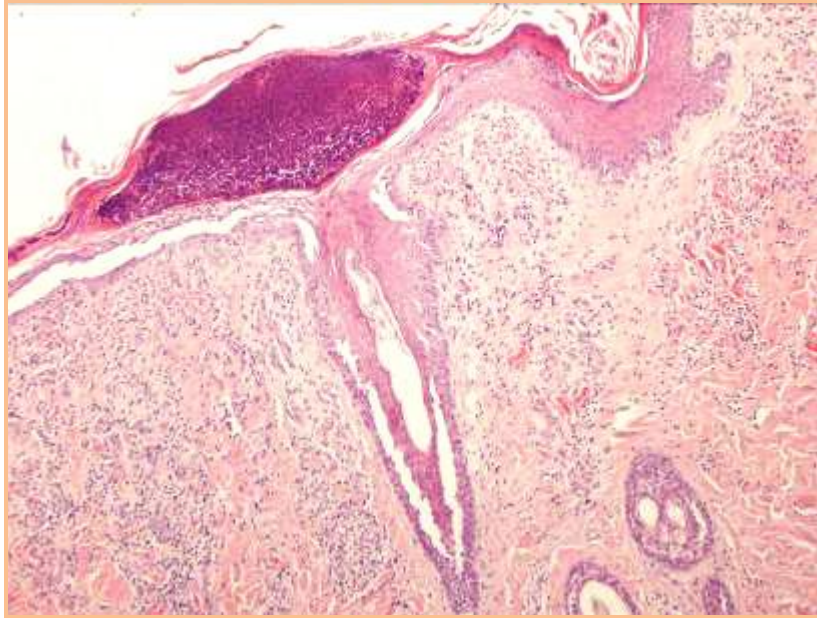


Figure 3 and 4 – Haired skin, 10x (H&E)

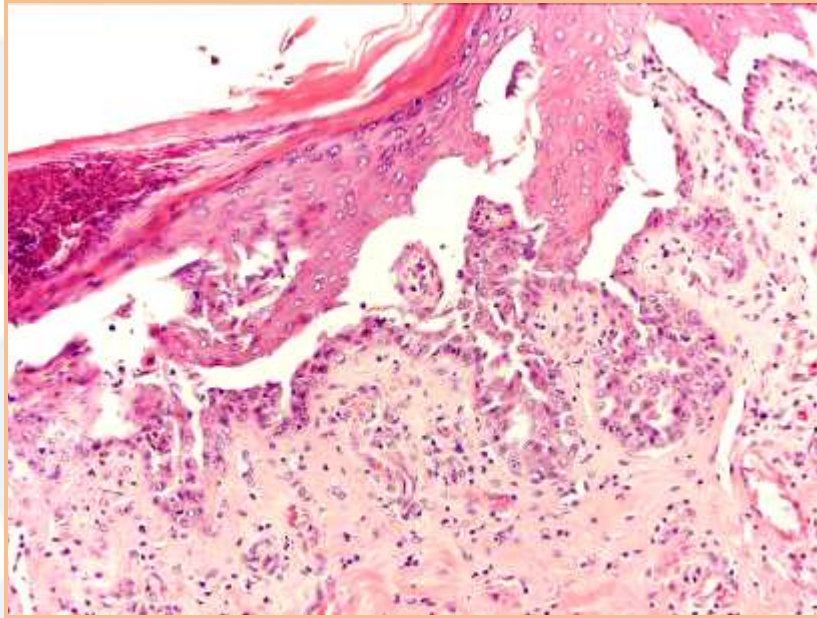


Figure 5 – Haired skin, 20x (H&E)

Follow-up questions: Description, Morphologic diagnosis, Differential diagnosis, possible pathogenesis

Please send your comments/questions to the whole LCPG list by hitting "reply to all".

A final document containing this material with answers and a brief discussion will be posted on the C. L. Davis website by the end of the current month (http://www.cldavis.org/lcpg_english.html).