



Latin Comparative Pathology Group

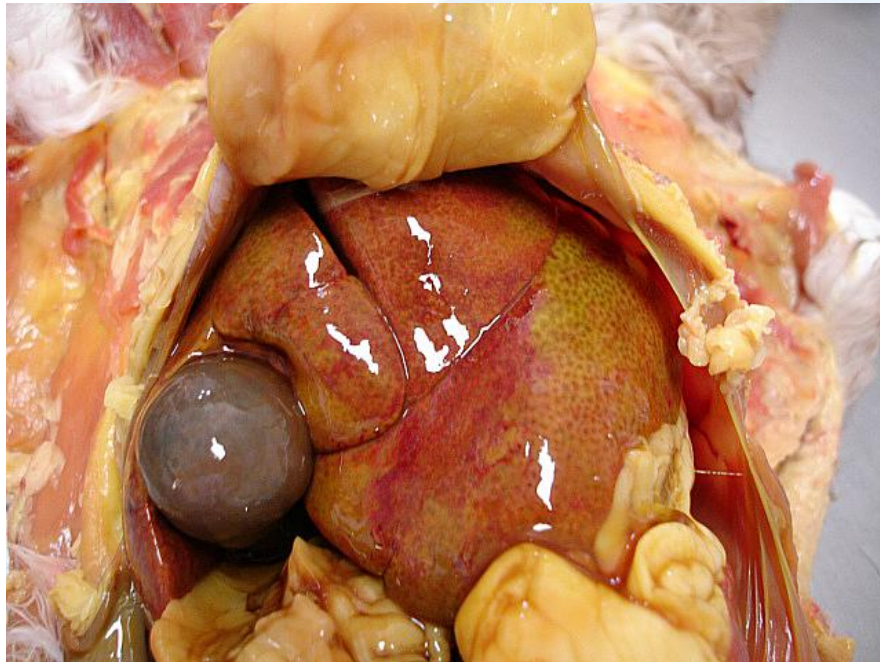
The Latin Subdivision of the CL Davis Foundation

Diagnostic Exercise

Case #: 29 Month: February Year: 2013

Contributor: Vinicius Carreira, DVM DACVP - Department of Environmental Health, College of Medicine, University of Cincinnati, Ohio.

History: A 3-year-old female domestic shorthaired cat presented to necropsy (see picture below).



Follow-up questions: Please provide (a) 3 gross morphologic diagnosis, (b) cause, and (c) likely histopathological findings.

Please send your comments/questions to the whole LCPG list by hitting "reply to all".

A final document containing this material with answers and a brief discussion will be posted on the C. L. Davis website by the end of the current month (http://www.cldavis.org/lcpg_english.html).