



Latin Comparative Pathology Group

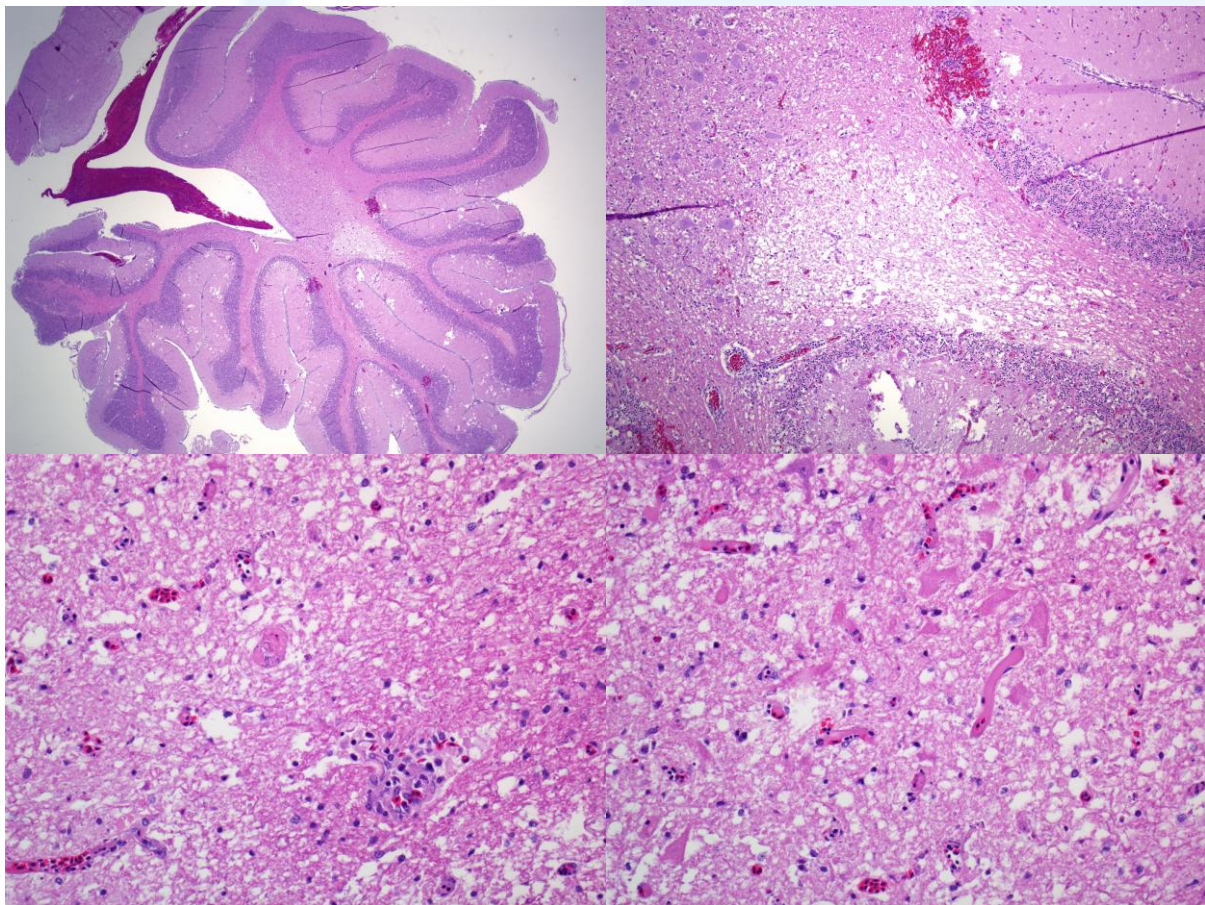
The Latin Subdivision of the CL Davis Foundation

Diagnostic Exercise

Case #: 28 Month: January Year: 2013

Contributor: Francisco Uzal, California Animal Health and Food Safety Laboratory, San Bernardino, UCDavis

History: Neurological disease and increased mortality was observed in three houses of 6-week-old layer pullets. No gross lesions were observed during necropsy.



Please provide: Morphologic diagnosis and possible cause/s.

Please send your comments/questions to the whole LCPG list by hitting "reply to all".

A final document containing this material with answers and a brief discussion will be posted on the C. L. Davis website by the end of the current month (http://www.cldavis.org/lcpg_english.html).

G
P
D
C
L

