



# Latin Comparative Pathology Group

## The Latin Subdivision of the CL Davis Foundation

### Diagnostic Exercise

**Case #: 27 Month: November Year: 2012**

**Contributor:** Hailu Kinde, DVM, MPVM, Branch Chief, California Animal Health and Food Safety Laboratory System, San Bernardino Branch; School of Veterinary Medicine, University of California, Davis

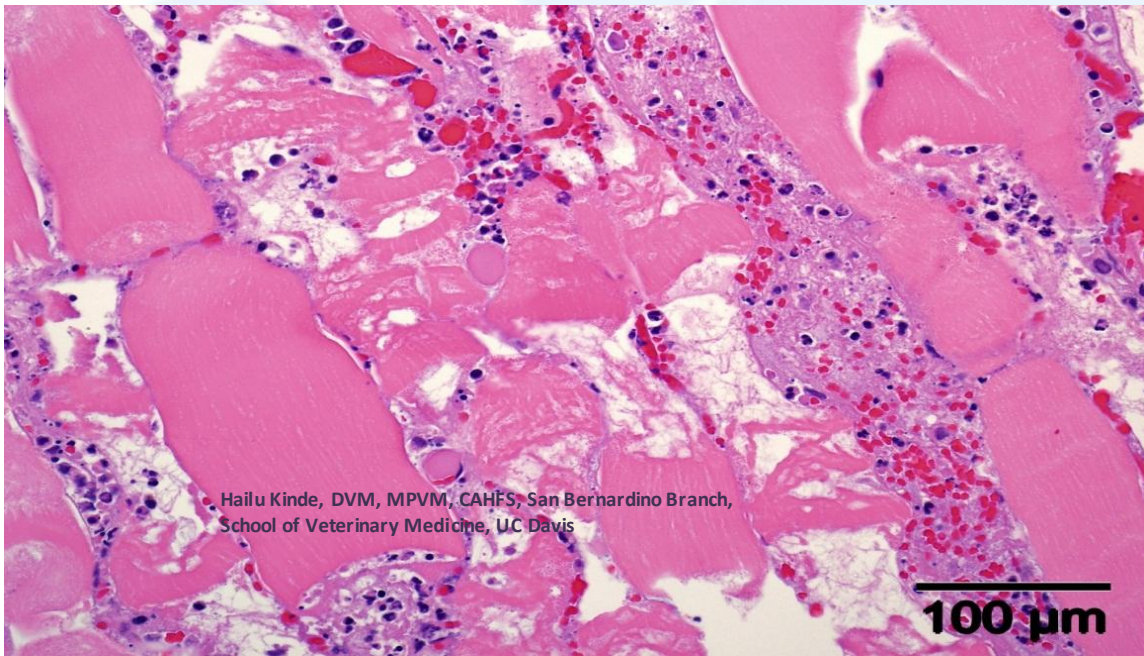
**Clinical History:** Within 72 hours following vaccination with WNV/EEE/WEE/TET, an adult horse developed progressive swelling on the left neck. The swelling progressively extended to the mandible, thoracic inlet, pectoral and upper limbs. At the time, the horse presented with increased heart rate (70-80 pm), cool extremities, muddy to light purple mucous membranes, and gas shadowing on ultrasound over the affected neck area. Therapy with antibiotics provided no improvement; euthanasia was elected due to declining condition and poor prognosis.

**Necropsy Findings:** Extensive necrosis of the musculature and fasciitis (neck extending to the mid thorax, pectoral muscles and upper limbs) with dissecting intramuscular yellowish edema.

**For the following gross and microscopic image, please provide:** *Description, Morphologic diagnosis, Etiologic diagnosis, Etiology, Associated clinical/clinical pathology finding, Associated lesion in other organ(s), Immuno/Histochemical findings, etc*



Hailu Kinde, DVM, MPVM, CAHFS, San Bernardino Branch, School of Veterinary Medicine, UC Davis



Hailu Kinde, DVM, MPVM, CAHFS, San Bernardino Branch,  
School of Veterinary Medicine, UC Davis

100  $\mu$ m

Please send your comments/questions to the whole LCPG list by hitting "reply to all".

A final document containing this material with answers and a brief discussion will be posted on the C. L. Davis website by the end of the current month ([http://www.cldavis.org/lcpg\\_english.html](http://www.cldavis.org/lcpg_english.html)).