

Latin Comparative Pathology Group

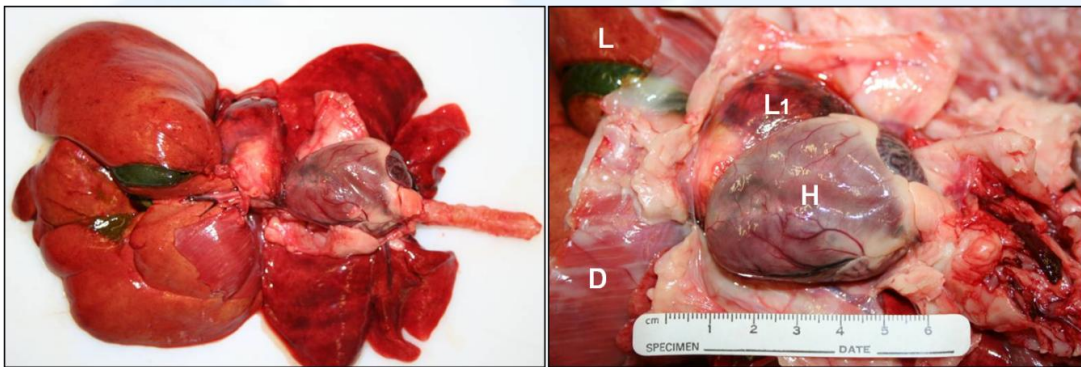
The Latin Subdivision of the CL Davis Foundation

Diagnostic Exercise

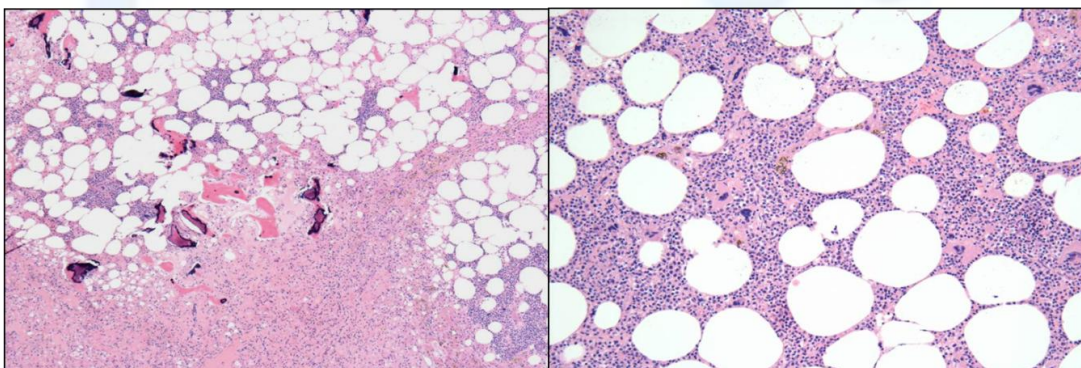
Case #: 23 Month: July Year: 2012

Contributor: Francisco R. Carvalho, Departamento de Patología Animal, Facultad de Ciencias Veterinarias y Pecuarias, Universidad de Chile.

Signalment and history: A 10.5 years old, male castrated Rag Doll cat. This cat was presented to a private veterinary clinic with dyspnea and a history of diabetes mellitus. The owner declined insulin treatment for diabetes. Treated with glypizide 2.5 mg BID. The cat did well for 1.5 years, but later it suddenly became anorexic. Ultrasound examination of the thoracic cavity revealed a mass in the pericardial sac, compressing the heart. The owner elected euthanasia.



L: Liver; D: Diaphragm; H: Heart. Histopathology taken from L1



Please provide: 1. Description (gross and histopathologic); 2. Morphologic diagnosis.

Please send your comments/questions to the whole LCPG list by hitting "reply to all".

A final document containing this material with answers and a brief discussion will be posted on the C. L. Davis website by the end of the current month (http://www.cldavis.org/lcpg_english.html).