



# Latin Comparative Pathology Group

## The Latin Subdivision of the CL Davis Foundation

### Diagnostic Exercise

Case #: 22 Month: June Year: 2012

**Contributor:** Francisco Uzal, California Animal Health and Food Safety Laboratory, San Bernardino, UCDavis

**History:** Tissue collected from a 1 year old steer during slaughter at a meat plant in Southern California and submitted for diagnostic work up.

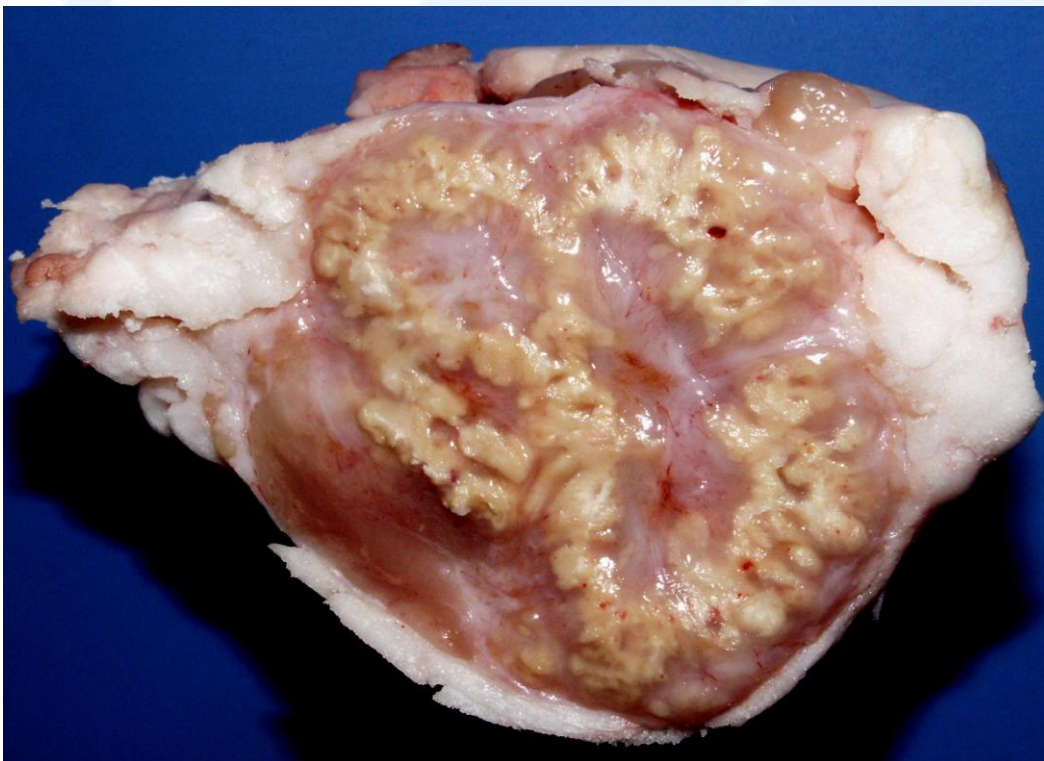


Photo courtesy of Dr Joaquin Ortega Porcel

**Please provide:** 1. Description, 2. Morphologic diagnosis, 3. Four possible causes

Please send your comments/questions to the whole LCPG list by hitting "reply to all".

A final document containing this material with answers and a brief discussion will be posted on the C. L. Davis website by the end of the current month ([http://www.cldavis.org/lcpg\\_english.html](http://www.cldavis.org/lcpg_english.html)).