

Latin Comparative Pathology Group

The Latin Subdivision of the CL Davis Foundation

Diagnostic Exercise

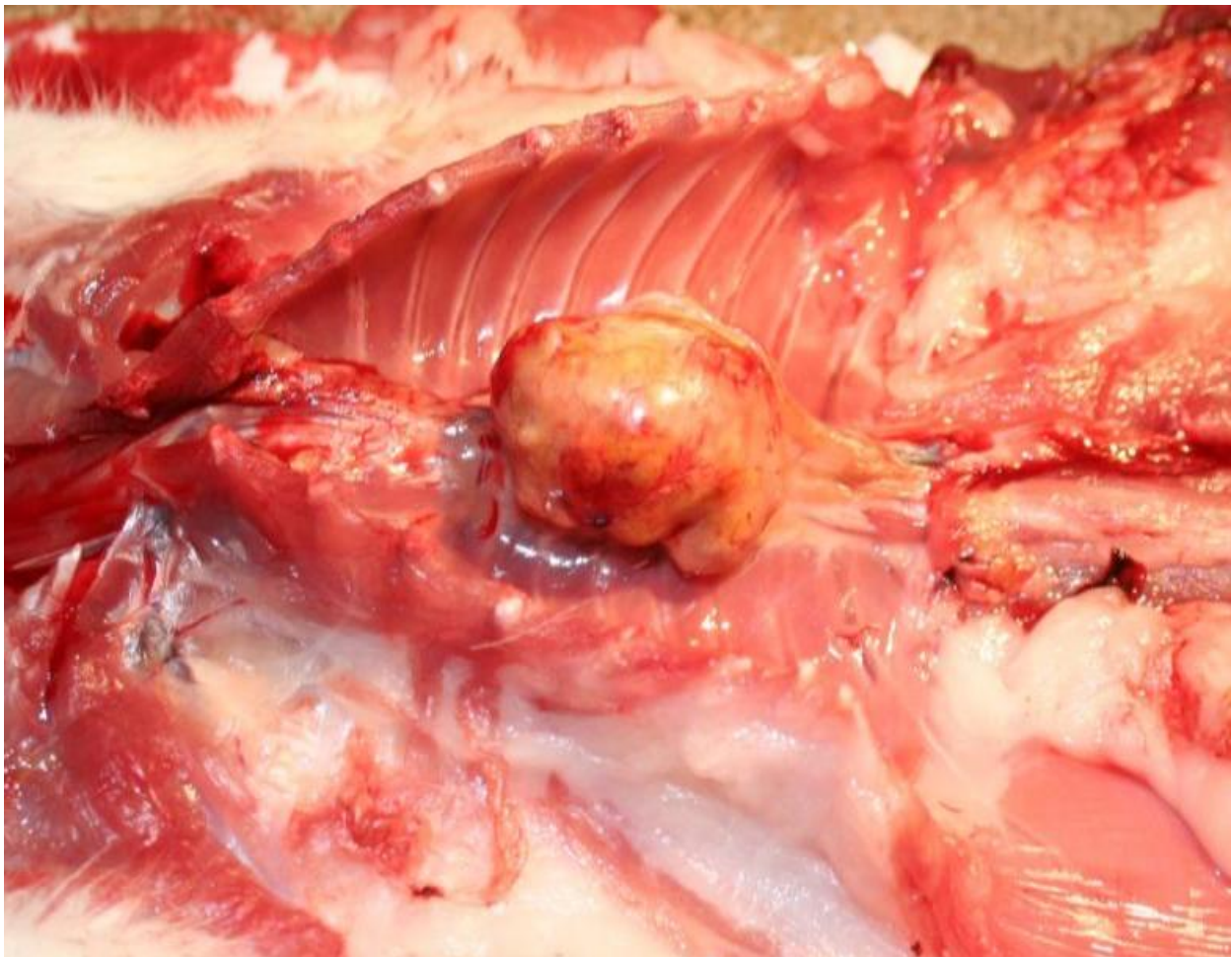
Case #: 15 Month: November Year: 2011

Contributor: Daniel Patrick, DVM, DACVP; Vinicius Carreira, DVM, DACVP - MPI Research

Clinical History: 98-week old control female Sprague-Dawley rat from a 2-year carcinogenicity study.

Laboratory Findings: None available.

Gross image:



Follow-up questions:

1. Morphologic diagnosis
2. Immunohistochemical marker
3. Ultrastructural findings

Please send your comments/questions to the whole LCPG list by hitting "reply to all".
A final document containing this material with answers and a brief discussion will be posted on the C. L. Davis website by the end of the current month (http://www.cldavis.org/lcpg_english.html).