

# Latin Comparative Pathology Group

## The Latin Subdivision of the CL Davis Foundation

### Diagnostic Exercise

Case #: 14 Month: October Year: 2011

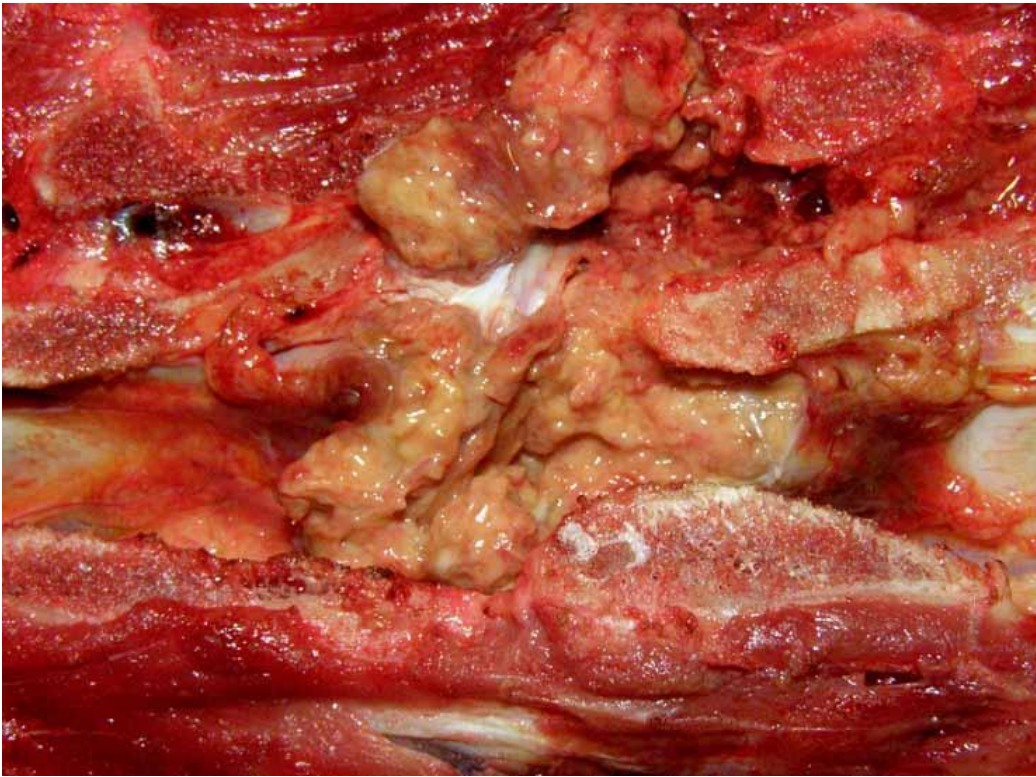
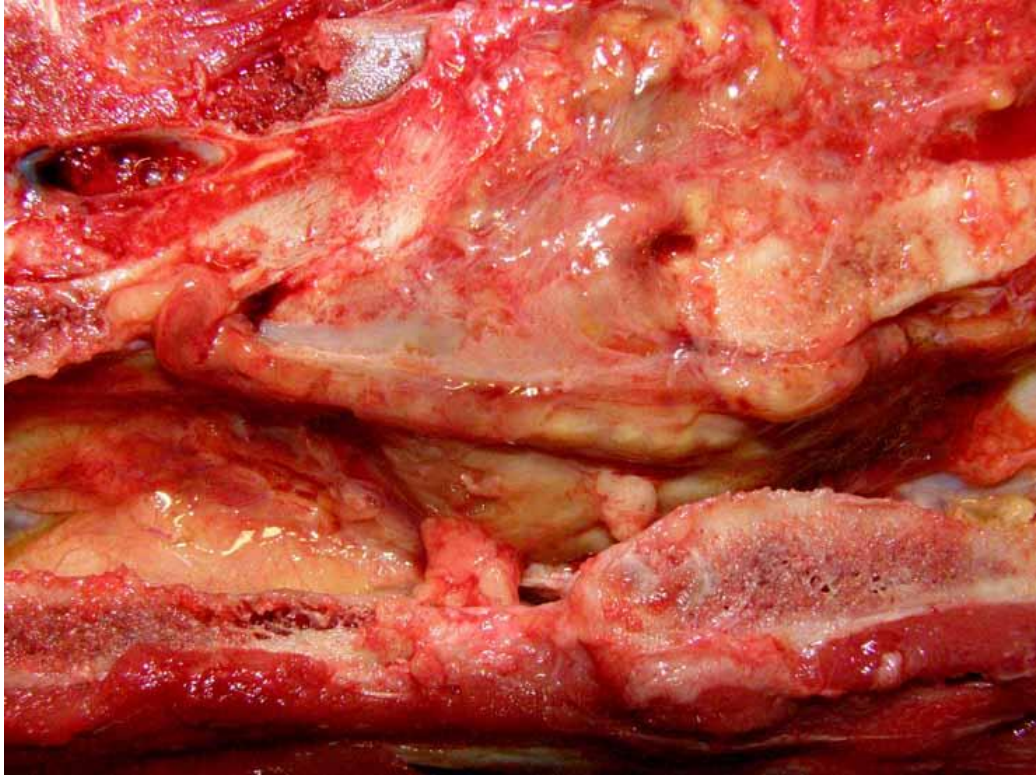
**Contributor:** Leonardo Minatel, DVM, PhD; Universidad de Buenos Aires, Argentina.

**Clinical History:** A three-month old Thoroughbred filly presented with tetraplegia, neck stiffness, and rectal temperature of 38.6 °C. Euthanasia was performed due to poor prognosis.

**Laboratory Findings:** Leukocytosis ( $42100 \times 10^6/L$ ) and hyperfibrinogenemia (791 mg/dl). Myelography revealed spinal cord compression at C5-C6 level.

**Necropsy Findings:** See gross photos.

**Gross and/or microscopic image:**



**Follow-up questions:**

1. Morphologic diagnoses
2. Etiology
3. Associated lesion in other organ(s)
4. Microscopic lesion(s) in the spinal cord

Please send your comments/questions to the whole LCPG list by hitting "reply to all".  
A final document containing this material with answers and a brief discussion will be posted on the C. L. Davis website by the end of the current month ([http://www.cldavis.org/lcpg\\_english.html](http://www.cldavis.org/lcpg_english.html)).