



# Diagnostic Exercise

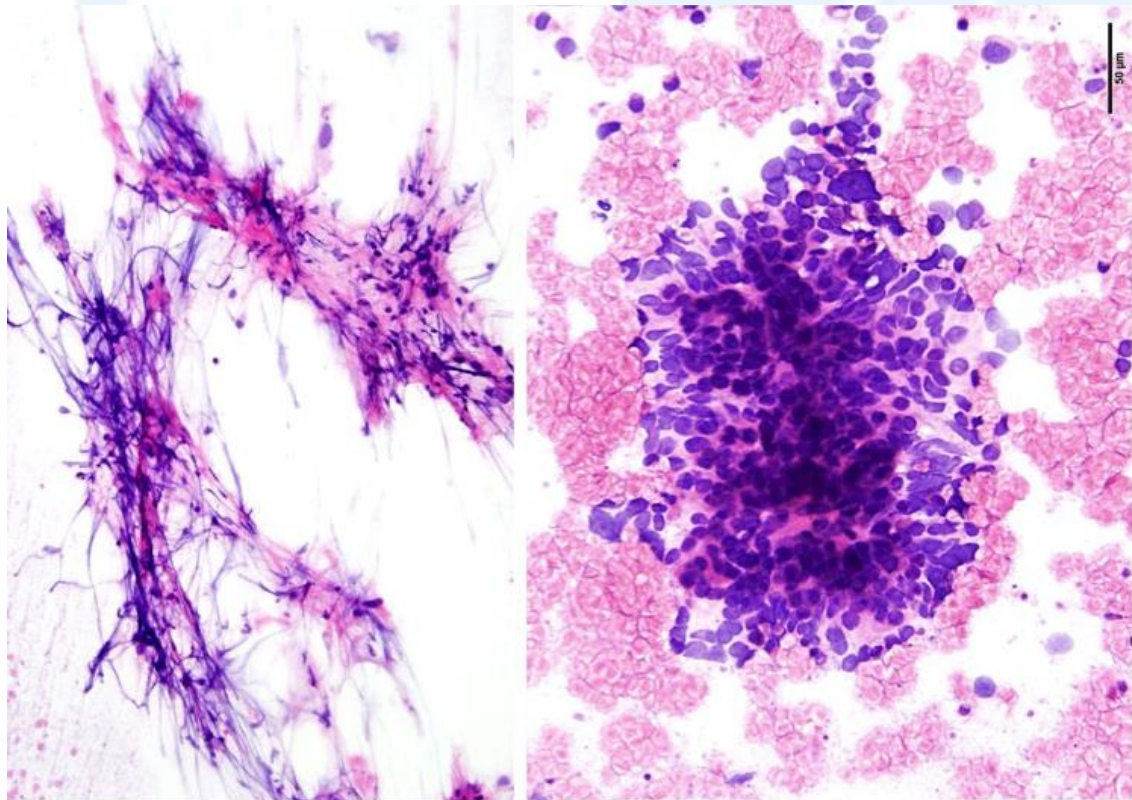
## From The Davis-Thompson Foundation\*

**Case #: 105 Month: September Year: 2018**

**Contributors:** Matthew Sheley, DVM Anatomic Pathology Resident III, Kevin Woolard, DVM, PhD, DACVP, School of Veterinary Medicine, University of California, Davis, William R. Pritchard Veterinary Medical Teaching Hospital, Davis, CA.

**Clinical History:** Eight-year old, intact male dachshund. The patient acutely began seizing and became blind. When presented to the UC Davis Veterinary Medical Teaching Hospital, the patient was obtunded and had absent menace response bilaterally, severe meiosis in the left eye, and minimal pupillary light reflex bilaterally. An MRI revealed a contrast enhancing mass of the left olfactory and frontal lobes with significant secondary edema.

**Cytology of the Brain Mass:** Left image, aspirate and cytology of a guided brain mass biopsy: Groups of cells with variable amounts of eosinophilic cytoplasm surrounding small vessels "like survivors hanging on to a life raft" (Woolard, PC). Occasional cytoplasmic processes are identified. Right image: Numerous dense aggregates of cells that vaguely palisade.



**Follow-Up Question:** Differential Diagnoses; Immunohistochemical profile.

\*The Diagnostic Exercises are an initiative of the **Latin Comparative Pathology Group (LCPG)**, the Latin American subdivision of The Davis-Thompson Foundation. These exercises are contributed by members and non-members from any country of residence. Consider submitting an exercise! A final document containing this material with answers and a brief discussion will be posted on the CL Davis website ([http://www.cldavis.org/diagnostic\\_exercises.html](http://www.cldavis.org/diagnostic_exercises.html)).

**Associate Editor for this Diagnostic Exercise:** Patricia Pesavento

**Editor-in-chief:** Vinicius Carreira