

Latin Comparative Pathology Group

The Latin Subdivision of the CL Davis Foundation

Diagnostic Exercise

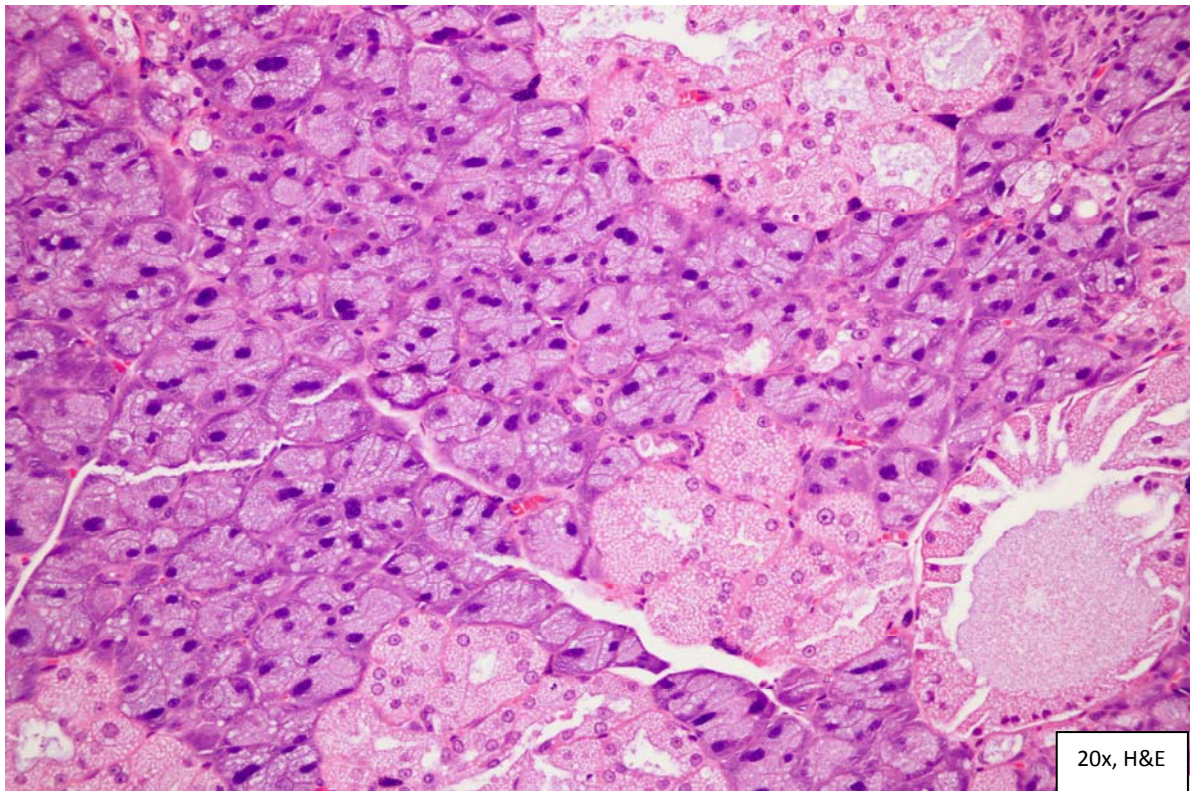
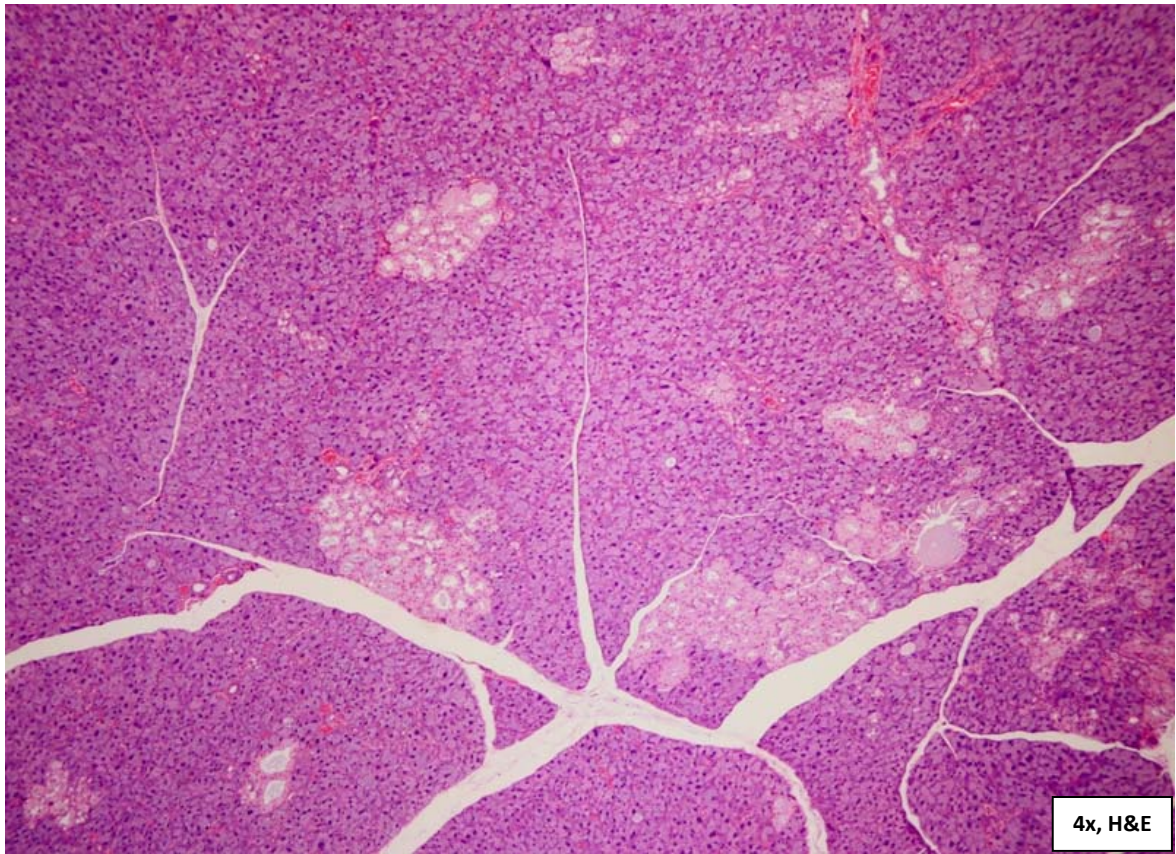
Case #: 10 Month: June Year: 2011

Contributor: *Marcia Elisa Pereira Bacares, DVM, MSc, DACVP, Histo-Scientific Research Laboratories, Mount Jackson, VA*

Clinical History: *20-week-old, female Harlan Sprague Dawley rat, control animal from a subchronic (13-week) oral toxicity study (daily dosed).*

Laboratory Findings and Necropsy Findings: *None available.*

Gross and/or microscopic image:



Follow-up questions: *Morphologic diagnosis*

Please send your comments/questions to the whole LCPG list by hitting "reply to all".

A final document containing this material with answers and a brief discussion will be posted on the C. L. Davis website by the end of the current month (http://www.cldavis.org/lcpg_english.html).