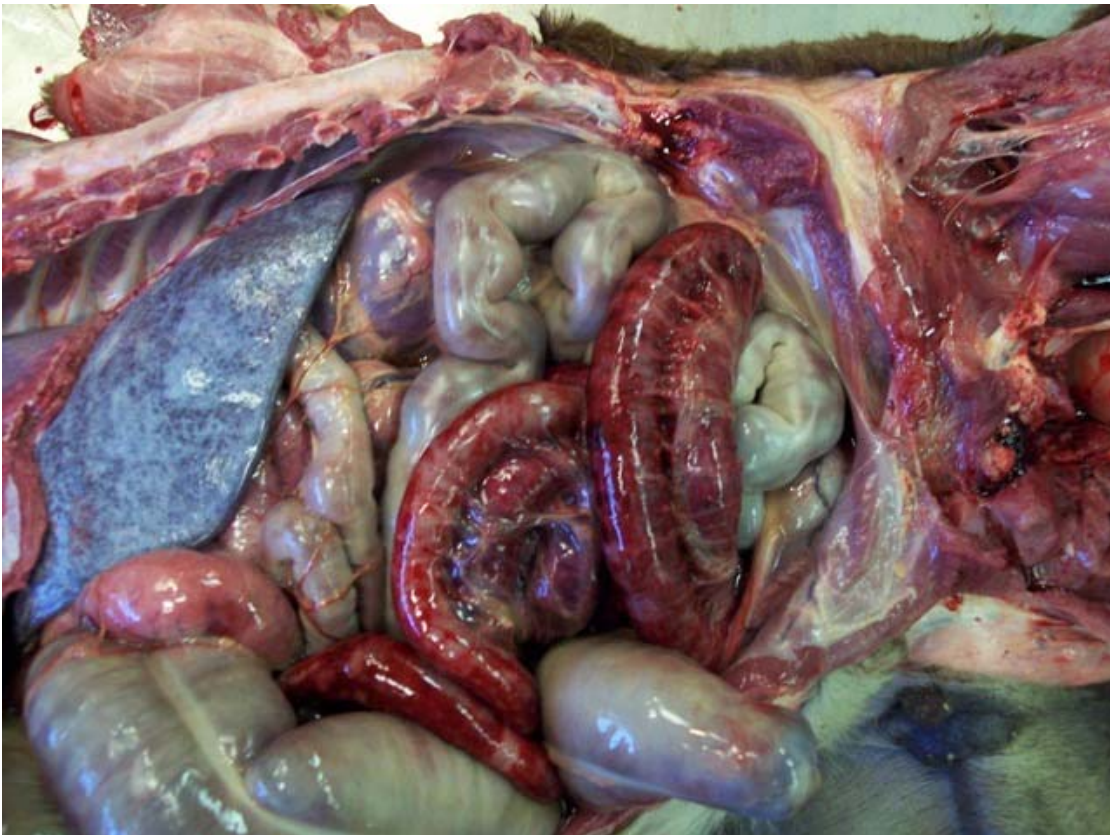


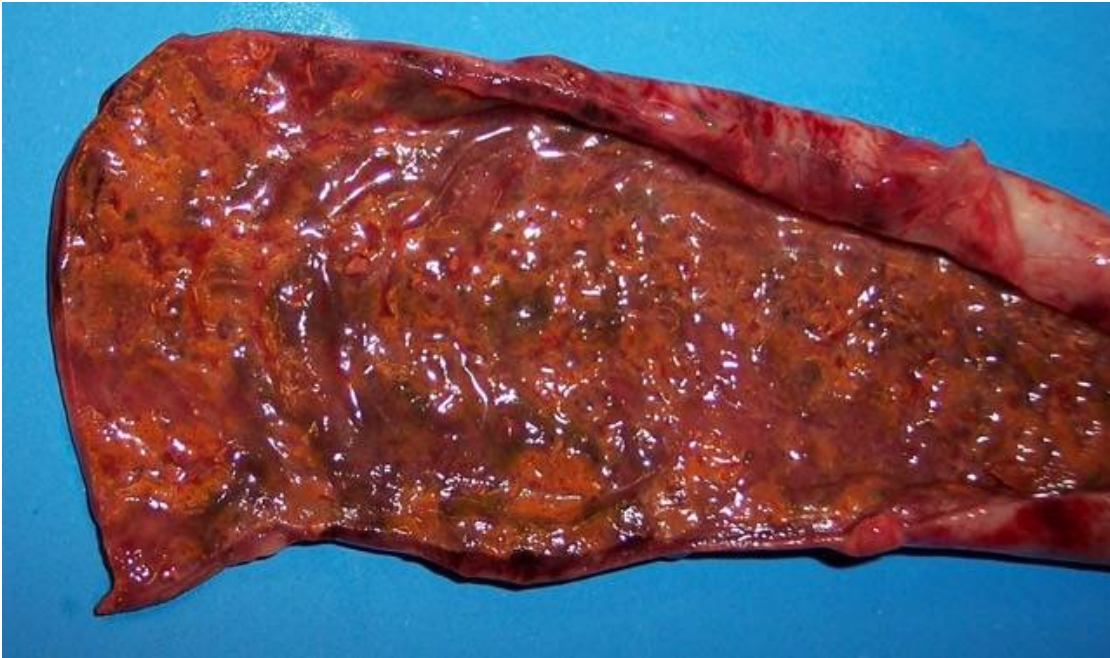
## LCGP DIAGNOSTIC EXERCISE # 1 (May 2010)

**Contributor:** Francisco Uzal, California Animal Health and Food Safety Laboratory, San Bernardino, UC Davis

**History:**

Two-day-old foal. Severe hemorrhagic diarrhea and colic of 24 hr duration causing death.





**Please provide:**

1. Description
2. Morphologic diagnosis
3. Most likely cause/s
- 4-Steps you would follow to confirm/rule out possible causes

Please send your comments/answers to the whole LCGP list, or individually to me at:  
fuzal@cahfs.ucdavis.edu

I will post my own answers to these questions together with a summary of the comments I receive from our members in a couple of weeks, at our website:  
[http://www.cldavis.org/lcpg\\_english.html](http://www.cldavis.org/lcpg_english.html)